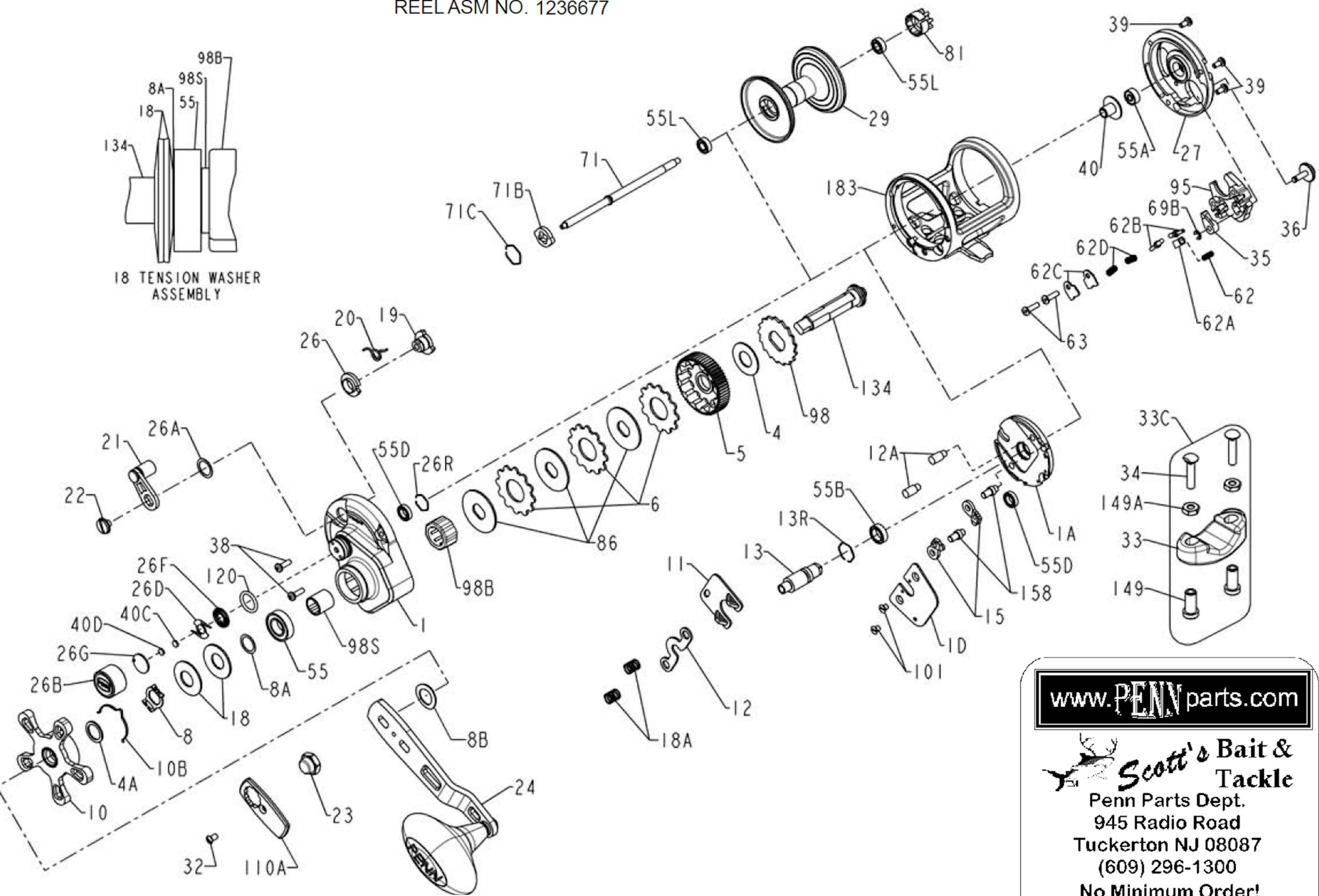
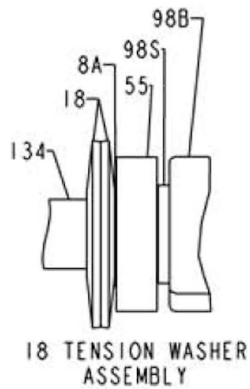




PARTS LIST FOR MODEL TRQ15G

REELASM NO. 1236677



SBT Ver 102811
 (based on Penn's Rev 1 5-10-2011)

www.PENNparts.com

Scott's Bait & Tackle
 Penn Parts Dept.
 945 Radio Road
 Tuckerton NJ 08087
 (609) 296-1300

**No Minimum Order!
 Plus, Parts in stock
 that Penn doesn't
 carry anymore.**

Penn Reel Parts list for:

Model: International Torque TRQ15G

KEY NO	PENN PART #	PUREFISHING PART #	DESCRIPTION
1	1-TRQ15G	1243341	RIGHT SIDE PLATE (GOLD/BLACK)
1A	1A-TRQ15	1228854	COVER, RIGHT SIDE
1D	1D-TRQ15S	1243352	GEAR COVER (SILVER)
4	4-60	1180755	GRAPHITE WASHER
4A	4-300T	1180770	GRAPHITE WASHER
5	5-TRQ15	1229005	MAIN GEAR
6	6-TRQ40	1237037	DRAG WASHER (4 REQUIRED)
8	8-TRQ40	1229041	DETENT SPRING RETAINER
8A	8A-TS7-8	1229050	SHIM
8B	8-60	1181056	TENSION WASHER
10	10-TRQ40G	1243355	DRAG STAR (GOLD/SILVER)
10B	10B-2.5FR	1181218	DETENT SPRING
11	11-TRQ25	1229315	ECCENTRIC JACK
12	12-555	1181271	PINION YOKE
12A	12A-TRQ40	1229319	YOKE PIN (2 REQUIRED)
13	13-TRQ15	1229339	PINION
13R	13R-TRQ40	1229364	RETAINING RING
15	15-TRQ40	1229374	DOG ASSEMBLY (2 REQUIRED)
18	18-505	1181623	TENSION WASHER (2 REQUIRED)
18A	18-525	1181624	YOKE SPRING (2 REQUIRED)
19	19-TRQ15	1229428	ECCENTRIC
20	20-525	1181785	ECCENTRIC SPRING
21	21-TRQ15G	1243358	ECCENTRIC LEVER ASSEMBLY (GOLD/SILVER)
22	22-60CH	1181908	SEMS SCREW W/WASHER (SILVER)
23	23-TRQ40S	1243364	HANDLE NUT (SILVER)
24	24-TRQ40G	1241383	HANDLE ASSEMBLY (GOLD/SILVER)
26	26-TRQ25	1229579	ECCENTRIC BUSHING
26A	26A-TRQ40	1229583	LEVER WASHER
26B	26B-525MAG2	1214706	SPOOL TENSION CAP
26D	26D-525MAG2	1125769	CLICK SPRING
26F	26F-525MAG2	1125768	CLICK PLATE A
26G	26G-525MAG2	1125772	CLICK PLATE B
26R	26R-525MAG2	1214654	RETAINING RING
27	27-TRQ15G	1243372	LEFT SIDE PLATE (GOLD/BLACK)
29	29-TRQ15G	1243386	SPOOL (GOLD/SILVER)
32	110-50	1184436	SCREW 5-40 (SILVER)
33	33N-113	1182754	ROD CLAMP
33C	33C-TRQ15	1229935	ROD CLAMP KIT

KEY NO	PENN PART #	PUREFISHING PART #	DESCRIPTION
34	34-45	1182788	ROD CLAMP SCREW (7/8in) (2 REQUIRED)
34	34-TRQ15	1229940	ROD CLAMP SCREW (1in) (2 REQUIRED)
35	35-TRQ40	1229949	CLICK TONGUE
36	36-TRQ40S	1243392	CLICK BUTTON (SILVER)
38	38-TRQ40S	1243393	SCREW (SILVER) (2 REQUIRED)
39	39-TRQ40S	1243395	SCREW (SILVER) (3 REQUIRED)
40	40-TRQ40	1230004	BUSHING, L.S. SPOOL
40C	40C-525MAG2	1208115	WASHER, METAL THRUST
40D	40D-525MAG2	1125771	WASHER, RUBBER THRUST
55	55-12H	1183873	BALL BEARING (HANDLE SIDE PLATE)
55A	55-113H	1183880	BALL BEARING (NON-HANDLE SIDE PLATE)
55B	55-525MAG2	1214665	BALL BEARING (12X8X3.5) (PINION)
55D	55A-525MAG2	1214666	BALL BEARING (2 REQUIRED)
55L	55L-965	1192031	BALL BEARING (2 REQUIRED) (SPOOL)
62	62-TRQ40	1236596	CLICK LOCATOR SPRING
62A	62A-TRQ40	1230189	CLICK BUTTON LOCATOR
62B	62B-310	1184036	CLICK PIN (2 REQUIRED)
62C	62C-321LH	1184041	SPRING COVER (2 REQUIRED)
62D	62A-310	1184033	CLICK SPRING (2 REQUIRED)
63	63-TRQ40	1230192	SCREW, PAND HEAD (2 REQUIRED)
69B	69B-50	1184125	RETAINING RING
71	71-TRQ15	1230214	SPOOL SPINDLE
71B	71B-TRQ40	1230226	SPOOL DRIVER
71C	71C-TRQ40	1230227	RETAINING RING
81	81-TRQ40	1230303	CLICK RATCHET
86	86-49L	1184251	DRAG WASHER, KEYED (3 REQUIRED)
95	95-TRQ40	1230373	CLICK HOUSING
98	98-TRQ40	1230412	ANTI-REVERSE RATCHET
98B	98B-750M	1200401	ANTI-REVERSE BEARING
98S	98S-TRQ40	1230425	BEARING SLEEVE
101	101-50S	1184404	SCREW, 5-40 (2 REQUIRED)
110A	110A-TRQ40G	1242335	HANDLE NUT CAP (GOLD/SILVER)
120	120-113H	1184522	O-RING
134	134-TRQ40	1230592	GEAR STUD
149	149-TRQ15	1230616	ROD CLAMP NUT (2 REQUIRED)
149A	149-200	1184706	ROD CLAMP HEX NUT (2 REQUIRED)
158	158-TRQ40	1230647	DOG PIN (2 REQUIRED)
183	183-TRQ15G	1243403	FRAME (GOLD/BLACK)

NOTE:

Many of www.pennparts.com schematics include changes that were either made by Penn, or errors found and corrected by our parts dept.

SBT VER. 102811 (BASED ON PENN'S REV 1 5-10-2011)