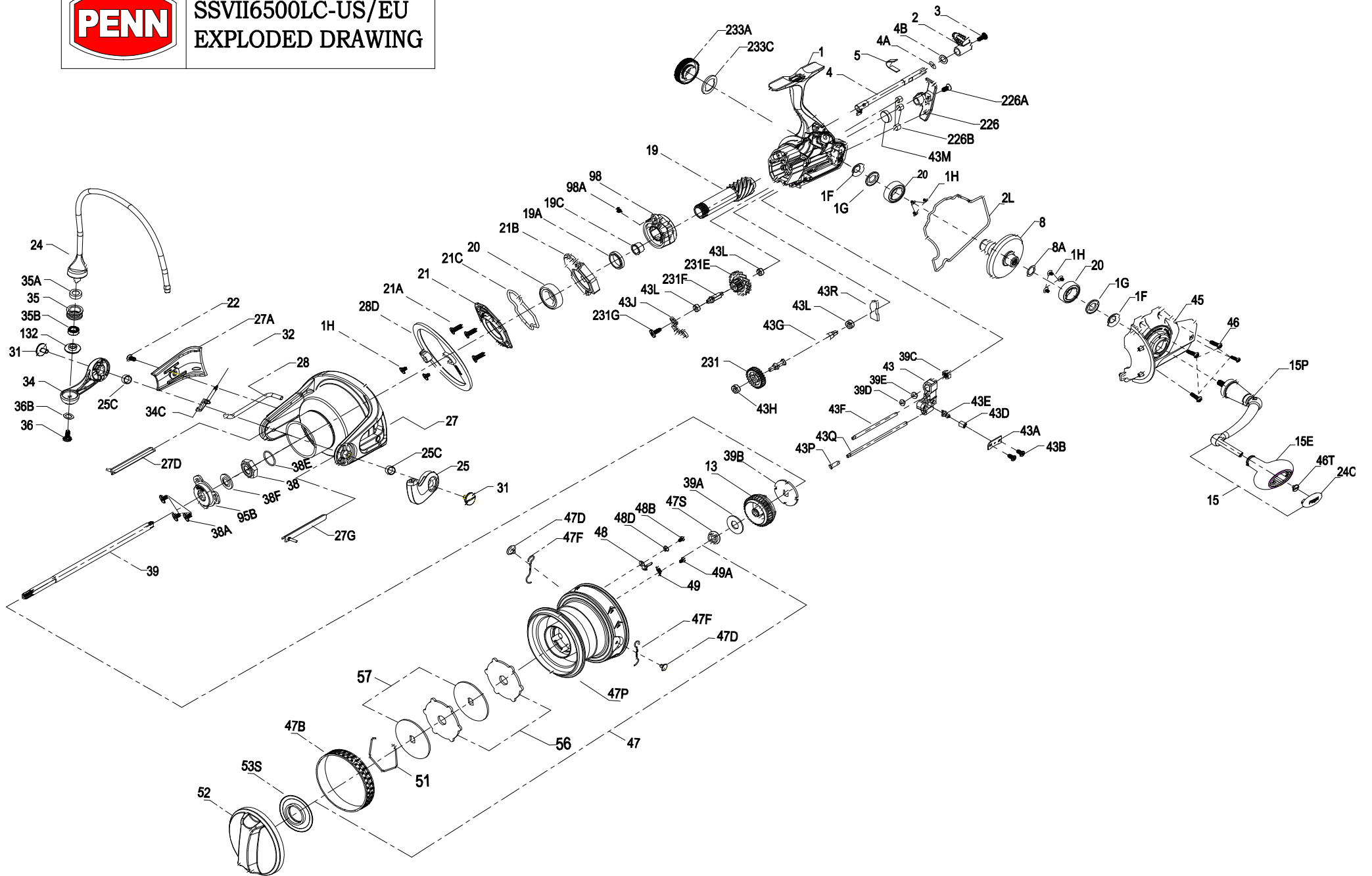
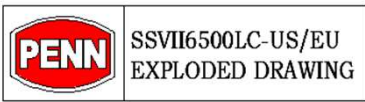




SSVII6500LC-US/EU  
EXPLODED DRAWING





KEY NO.	PART NO.	PENN STYLE NO.	DESCRIPTION	KEY NO.	PART NO.	PENN STYLE NO.	DESCRIPTION
1	1610963	1-SSVII5500LC	Body Assembly	39A	1483099	39A-CFTII4000LC	Spool Adjust Washer
1	1610964	1-SSVII5500LCEU	Body Assembly	39B	1483100	39B-CFTII4000LC	Main Shaft Washer
1F	1419019	1F-SLA5500	Body Side Seal	39C	1483101	39C-CFTII4000LC	Main Shaft Nut
1G	1419020	1G-SLA5500	Body Side Seal Lock Plate	39D	1483147	39D-CFTII5000LC	Rubber Pad
1H	1418957	1H-SLA3500	Body Side Screw	39E	1483148	39E-CFTII5000LC	Fixing Plate
2	1341498	2-SSV7500LC	A/R Button	43	1483149	43-CFTII5000LC	Oscillation Slider
2L	1494818	2L-SSVI5500LC	Body Seal	43A	1259635	43A-7000AF	Slider Retainer Plate
3	1341500	3-SSV7500LC	A/R Button Screw	43B	1276992	14-SSV6500LL	O/S Slider Retainer Screw
4	1483122	4-CFTII5000LC	A/R Pawl / Lever	43D	1122193	43D-7000AF	Oscillation Slide Bushing
4A	1341502	4A-SSV7500LC	A/R Lever Seal	43E	1122192	43E-7000AF	Guide Pawl
4B	1361929	4B-SSV7500LC	A/R Lever Washer	43F	1483150	43F-CFTII5000LC	Right Guide Shaft
5	1483123	5-CFTII5000LC	A/R Pawl / Lever Spring	43G	1494835	43G-SSVI5500LC	Worm Shaft
8	1611035	8-SSVII5500LC	Drive Gear	43H	1377609	43H-BTLII8000LC	Worm Shaft Ball Bearing
8A	1277037	8A-SSV5500	Drive Gear Shim Washer	43J	1483154	43J-CFTII5000LC	Worm Shaft Top Retainer Plate
13	1483048	13-CFTII4000LC	Clicker Gear	43L	1341533	43L-SSV7500LC	Worm Shaft Lower Bushing
15	1494820	15-SSVI5500LC	Handle Assembly	43M	1341534	43M-SSV7500LC	Worm Shaft Seal
15E	1494749	15E-SSVI6500LL	Handle Knob	43P	1494846	43P-SSVI5500LC	Guide Shaft Seal
15P	1494821	15P-SSVI5500LC	Sub-Handle Assembly	43Q	1483151	43Q-CFTII5000LC	Left Guide Shaft
19	1494822	19-SSVI5500LC	Pinion Gear	43R	1483155	43R-CFTII5000LC	Rear Retainer Plate
19A	1483128	19A-CFTII5000LC	Pinion Gear Washer	45	1494836	45-SSVI5500LC	Body Cover Assembly
19C	1339492	19C-CLA 5000	Pinion Gear POM Bushing	46	1277074	46-SSV5500	Body Cover Screw
20	1308090	20-CFT5000	Ball Bearing	46T	1494762	46T-SSVI6500LL	Screw
21	1494823	21-SSVI5500LC	Pinion Bearing Retainer	47	1610965	47-SSVII5500LC	Spool Assembly
21A	1277044	21A-SSV5500	Pinion Bearing Retainer Screw	47B	1483162	47B-CFTII5000LC	Spool Band
21B	1494824	21B-SSVI5500LC	Collar	47D	1483163	47D-CFTII5000LC	Line Clip
21C	1494825	21C-SSVI5500LC	Collar Seal	47F	1483164	47F-CFTII5000LC	Line Clip Retainer
22	1092845	22-CLA2000	Rotor Cover Screw	47P	1610966	47P-SSVII5500LC	Spool
24	1494826	24-SSVI5500LC	Bail Assembly	47S	1494845	47S-SSVI5500LC	Seal
24C	1494753	24C-SSVI6500LL	Handle Knob Cap	48	1483167	48-CFTII5000LC	Spool Clicker
25	1339500	25-CLA5000	Bail Holder	48B	1385581	48B-CLA3000	Spool Clicker Screw
25C	1102065	25C-CLA5000	Bushing	48D	1341546	48D-SSV7500LC	Spool Clicker Spacer Ring
27	1494827	27-SSVI5500LC	Rotor	49	1259579	49-7000AF	Spool Clicker Spring
27A	1494828	27A-SSVI5500LC	Rotor Cover	49A	1341547	49A-SSV7500LC	Spool Clicker Spring Screw
27D	1494829	27D-SSVI5500LC	Line Guard	51	1447925	51-CFTII5000	Drag Ring
27G	1494830	27G-SSVI5500LC	Line Guard	52	1494839	52-SSVI5500LC-US	Drag Knob Assembly
28	1494831	28-SSVI5500LC	Bail Trip Lever	52	1494840	52-SSVI5500LC-EU	Drag Knob Assembly
28D	1494832	28D-SSVI5500LC	Rotor Brake	53S	1447927	53S-CFTII5000	Drag Knob Seal
31	1339513	31-CLA5000	Arm Lever Screw	56	1339557	56-CLA5000	Drag Friction Washer
32	1277162	32-SSV7500	Bail Spring	57	1483172	57-CFTII5000LC	Drag Keyed Washer
34	1389468	34-CLA6000	Bail Arm	95B	1494841	95B-SSVI5500LC	Rotor Locking Plate
34C	1389469	34C-CLA6000	Pivot Arm	98	1494842	98-SSVI5500LC	Clutch Assembly
35	1277059	35-SSV5500	Line Roller	98A	1378449	98A-BTLII8000LCLL	Clutch Assembly Spring
35A	1457404	35A-SLAIII6500HS	Bushing	132	1419049	132-SLA5500	Line Roller Collar
35B	1377606	35A-BTLII8000LC	Ball Bearing	226	1494843	226-SSVI5500LC	Rear Cover
36	1277166	36-SSV7500	Line Roller Screw	226A	1341553	226A-SSV7500LC	Rear Cover Screw
36B	1417809	36B-CLA6000	Washer	226B	1341554	226B-SSV7500LC	Body Rear Seal
38	1419051	38-SLA5500	Rotor Nut	231	1483175	231-CFTII5000 LC	Oscillation Gear
38A	1119121	20C-7000AF	Rotor Nut Screw	231E	1483176	231E-CFTII5000 LC	Slow O/S Gear
38E	1418958	38E-SLA3500	Pinion Gear Seal	231F	1483177	231F-CFTII5000 LC	Slow O/S Gear Pin
38F	1419052	38F-SLA5500	Rotor-Main Shaft Seal	231G	1494844	231G-SSVI5500LC	Screw
39	1494833	39-SSVI5500LC-US	Main Shaft	233A	1419118	233A-SLA7500	Handle Cap Assembly
39	1494834	39-SSVI5500LC-EU	Main Shaft	233C	1419076	233C-SLA5500	Handle Cap Seal



Thank you for your recent PENN gear purchase. No matter where you fish or what you fish for, you can depend PENN to perform in any battle day in and day out. Now it's time to get your product registered and get out on the water.

<https://register.pennfishing.com>