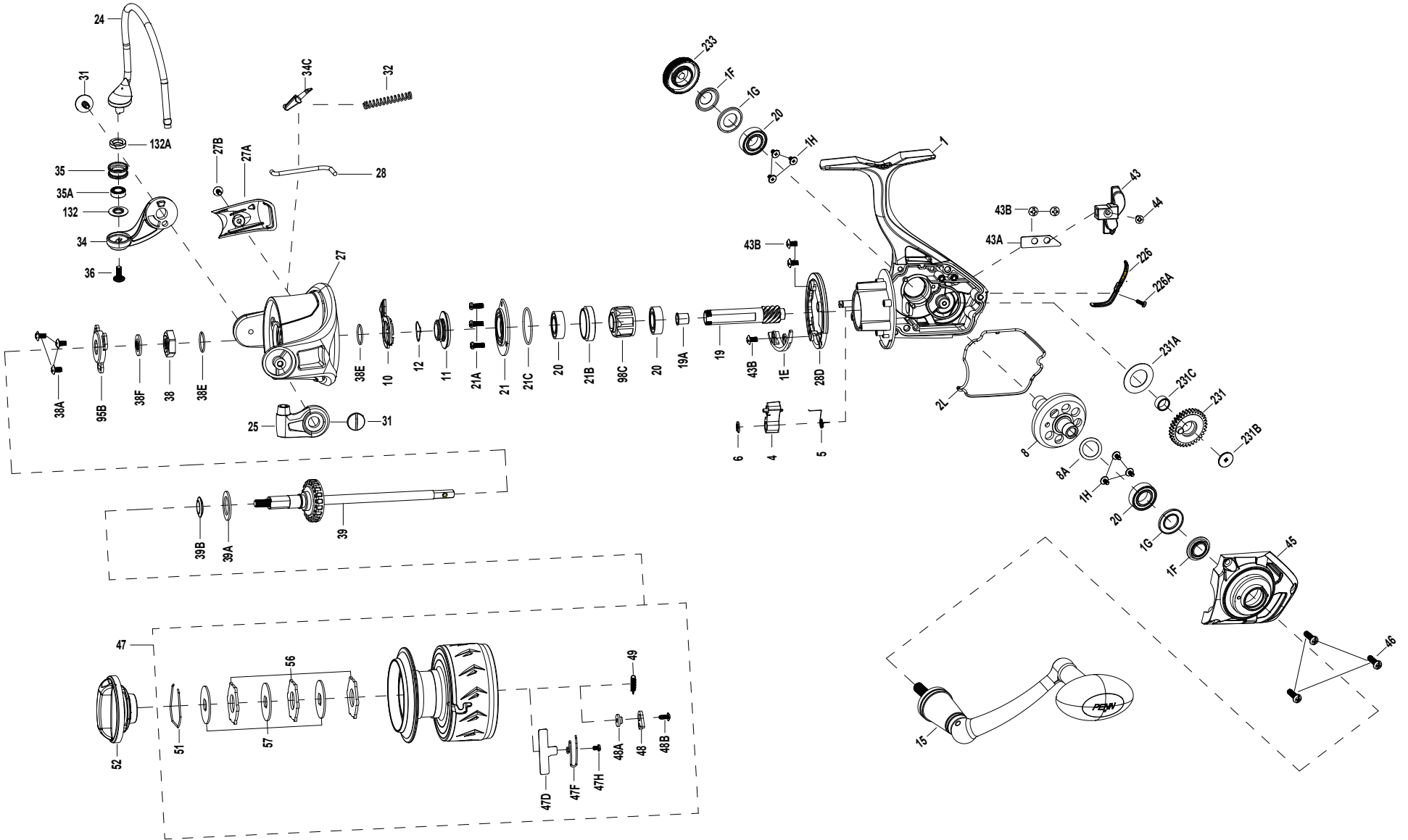




SSVII5500
EXPLODED DRAWING





Thank you for your recent PENN gear purchase. No matter where you fish or what you fish for, you can depend PENN to perform in any battle day in and day out. Now it's time to get your product registered and get out on the water.

<https://register.pennfishing.com>

KEY NO.	PART NO.	PENN STYLE NO.	DESCRIPTION
1	1612352	1-SSVII5500	Housing Assembly
1E	1489417	1E-SSVI5500	Housing Slope
1F	1489419	1F-SSVI5500	Main Gear Seal Ring(2 req)
1G	1489418	1G-SSVI5500	Seal Plate(2 req)
1H	1489176	1H-SSVI3500	Bearing Screw (6 req)
2L	1489420	2L-SSVI5500	Housing Seal Ring
4	1489421	4-SSVI5500	A/R Pawl
5	1489422	5-SSVI5500	Pawl Spring
6	1190979	6-5000SG	Retaining Clip
8	1489449	8-SSVI6500	Main Gear
8A	1485572	8B-PURIII5000	Shim
10	1489424	10-SSVI5500	A/R Holder
11	1489425	11-SSVI5500	Bushing
12	1489426	12-SSVI5500	Bushing Spring
15	1489427	15-SSVI5500	Handle Assembly
19	1489428	19-SSVI5500	Pinion Gear
19A	1489429	19A-SSVI5500	Pinion Bushing
20	1308090	20-CFT5000	Ball Bearing (4 req)
21	1489430	21-SSVI5500	Bearing Retainer
21A	1192645	21A-5000SG	Screw (3 req)
21B	1489431	21B-SSVI5500	Collar
21C	1489303	21C-SSVI7500	Bearing Retainer O-Ring
24	1489432	24-SSVI5500	Bail Wire
25	1489391	25-SSVI5500	Bail Holder

KEY NO.	PART NO.	PENN STYLE NO.	DESCRIPTION
27	1489392	27-SSVI5500	Rotor
27A	1489393	27A-SSVI5500	Bail Pivot Cover
27B	1203997	43B-3000PUR	Bail Pivot Cover Screw
28	1489394	28-SSVI5500	Trip Lever
28D	1489395	28D-SSVI5500	Rotor Brake
31	1489396	31-SSVI5500	Bail Arm Screw (2 req)
32	1489397	32-SSVI5500	Bail Spring
34	1489398	34-SSVI5500	Bail Arm
34C	1489399	34C-SSVI5500	Pivot Arm
35	1489400	35-SSVI5500	Line Roller
35A	1242222	35A-5000BTL	Line Roller Bearing
36	1191699	36-3000SG	Bail Stud Screw
38	1489401	38-SSVI5500	Rotor Nut
38A	1489202	38A-SSVI3500	Cover Screw(3req)
38E	1489203	38E-SSVI3500	Rotor O-Ring(2 req)
38F	1489402	38F-SSVI5500	Main Shaft Seal Ring
39	1489403	39-SSVI5500	Main Shaft Assembly
39A	1489320	39A-SSVI7500	Thrust Washer
39B	1489321	39B-SSVI7500	Spool Seal
43	1489404	43-SSVI5500	Crosswind Block
43A	1489405	43A-SSVI5500	Crosswind Block Plate
43B	1489213	43B-SSVI3500	Plate Screw (5 req)
44	1191845	44-5000SG	Crosswind Block Screw
45	1489406	45-SSVI5500	Housing Cover Assembly

KEY NO.	PART NO.	PENN STYLE NO.	DESCRIPTION
46	1191903	46-5000SG	Housing Cover Screw (3req)
47	1612353	47-SSVII5500	Spool Assembly
47D	1612339	47D-SSVII2500	Line Clip
47F	1612348	47F-SSVII4500	Line Clip Spring
47H	1529492	47H-BTLIII5000	Line Clip Spring Screw
48	1211625	48-5000SG	Click Tongue
48A	1211626	48A-5000SG	Click Tongue Washer
48B	1489327	48B-SSVI7500	Spool Click Screw
49	1211627	49-5000SG	Click Tongue Spring
51	1308112	51-CFT5000	Drag Retaining Ring
52	1489409	52-SSVI5500	Drag Knob Assembly
56	1308114	56-CFT5000	Drag Washer (3 req)
57	1192044	57-5000SG	Keyed Washer (3 req)
95B	1489223	95B-SSVI3500	Rotor Locking Plate
98C	1308116	98C-CFT5000	Clutch/Sleeve Assembly
132	1489410	132-SSVI5500	Roller Washer
132A	1489411	132A-SSVI5500	Line Roller Bushing
226	1489412	226-SSVI5500	Rear Cover
226A	1489227	226A-SSVI3500	Rear Cover Screw
231	1489413	231-SSVI5500	Crosswind Gear
231A	1489414	231A-SSVI5500	Crosswind Gear Washer
231B	1489338	231B-SSVI7500	Crosswind Gear Screw
231C	1489339	231C-SSVI7500	Crosswind Gear Sleeve
233	1489415	233-SSVI5500	Bearing Cover Assembly