



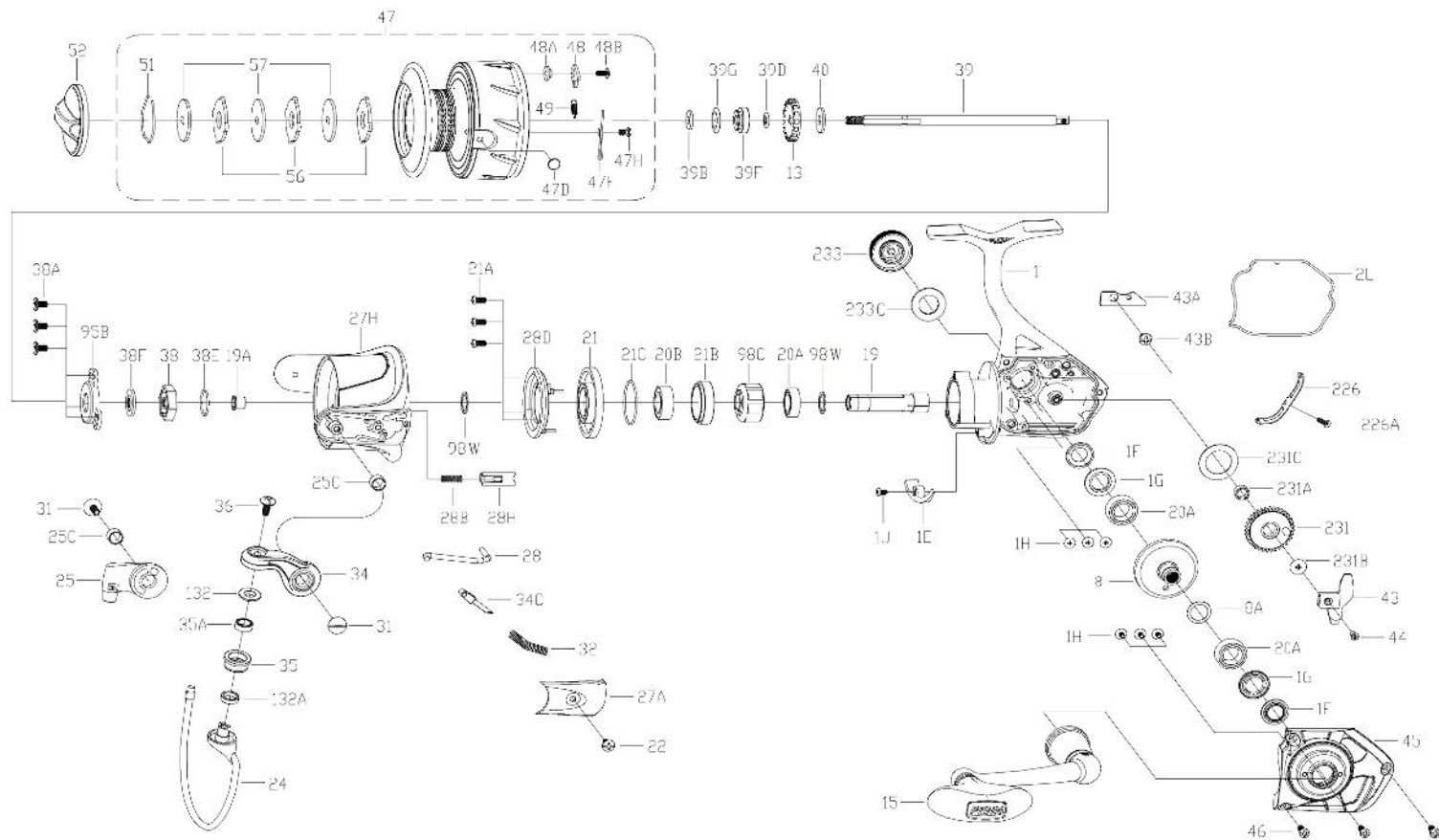
PARTS LIST FOR
MODEL SSVI4500



965 Radio Road
Little Egg Harbor, NJ 08087
+1 (609) 296-1300

www.mysticparts.com
customerservice@mysticparts.com

MRP Ver 102118
(based on Penn's Rev 1 7-3-18)



Penn Reel Parts list for Model: SSVi4500 Spinfisher VI (1481262)

KEY NO	PUREFISHING NO.	PENN PART NO.	DESCRIPTION	KEY NO	PUREFISHING NO.	PENN PART NO.	DESCRIPTION
1	1489233	1-SSVi4500	HOUSING, BODY ASSEMBLY	38E	1489203	38E-SSVi3500	ROTOR O-RING
1E	1489173	1E-SSVi3500	HOUSING SLOPE	38F	1489204	38F-SSVi3500	SEAL RING (FOR MAIN SHAFT)
1F	1489174	1F-SSVi3500	SEAL RING (FOR MAIN GEAR) (2 REQUIRED)	39	1489238	39-SSVi4500	MAIN SPOOL SHAFT
1G	1489175	1G-SSVi3500	SEAL PLATE (2 REQUIRED)	39B	1489206	39B-SSVi3500	THRUST WASHER
1H	1489176	1H-SSVi3500	BEARING SCREW (6 REQUIRED)	39D	1489207	39D-SSVi3500	SPOOL BUSHING SEAL RING
1J	1489177	1J-SSVi3500	HOUSING SLOPE SCREW	39F	1489208	39F-SSVi3500	SPOOL BUSHING
2L	1489178	2L-SSVi3500	SEAL FOR HOUSING BODY	39G	1489209	39G-SSVi3500	SPOOL SEAL RING
8	1489179	8-SSVi3500	MAIN DRIVE GEAR	40	1489210	40-SSVi3500	MAIN SHAFT WASHER
8A	1191028	8A-3000SG	SHIM, WASHER (FOR MAIN GEAR)	43	1489211	43-SSVi3500	OSCILLATION SLIDER (CROSSWIND BLOCK)
13	1489180	13-SSVi3500	CLICK RATCHET	43A	1489212	43A-SSVi3500	OSCILLATION SLIDER GUIDE (CROSSWIND PLATE)
15 for Handle see below							
19	1489182	19-SSVi3500	PINION GEAR	43B	1489213	43B-SSVi3500	CROSSWIND OSCILLATION SLIDER BUSHING SCREW
19A	1191252	19A-3000SG	PINION GEAR WASHER	44	1489214	44-SSVi3500	CROSSWIND BLOCK SCREW
20A	1308050	20-CFT3000	BALL BEARING (3 REQUIRED)	45	1489239	45-SSVi4500	HOUSING / BODY COVER
20B	1308051	20A-CFT3000	BALL BEARING	46	1192645	21A-5000SG	HOUSING / BODY COVER SCREW (3 REQUIRED)
21	1489183	21-SSVi3500	PINION BEARING RETAINER	47	1489240	47-SSVi4500	SPOOL ASSEMBLY
21A	1489184	21A-SSVi3500	PINION RETAINER SCREW (3 REQUIRED)	47D	1489217	47D-SSVi3500	LINE CLIP
21B	1489185	21B-SSVi3500	COLLAR, FOR PINION BALL BEARING	47F	1489218	47F-SSVi3500	LINE CLIP SPRING
21C	1489186	21C-SSVi3500	O-RING, FOR BEARING RETAINER	47H	1489219	47H-SSVi3500	LINE CLIP SPRING SCREW
22	1203997	43B-3000PUR	SCREW FOR ROTOR COVER (AKA BAIL PIVOT)	48	1211604	48-3000SG	CLICK TONGUE
24	1489234	24-SSVi4500	BAIL WIRE	48A	1214226	48A-3000SG	CLICK TONGUE WASHER
25	1489188	25-SSVi3500	BAIL HOLDER (BAIL CAM)	48B	1489220	48B-SSVi3500	SPOOL CLICK SCREW
25C	1489189	25C-SSVi3500	BUSHING (2 REQUIRED)	49	1211605	49-3000SG	CLICK TONGUE SPRING
27A	1489235	27A-SSVi4500	BAIL PIVOT COVER	51	1308078	51-CFT3000	DRAG WASHER RETAINING RING
27H	1489236	27-SSVi4500	ROTOR (AKA 27H-SSVi4500 TYPO?)	52	1489221	52-SSVi3500	DRAG KNOB ASSEMBLY
28	1489237	28-SSVi4500	TRIP LEVER	56	1308080	56-CFT3000	DRAG FRICTION WASHER (3 REQUIRED)
28B	1489193	28B-SSVi3500	ROTOR BRAKE SPRING	57	1489222	57-SSVi3500	KEYED METAL DRAG WASHER (3 REQUIRED)
28D	1489194	28D-SSVi3500	ROTOR BRAKE	95B	1489223	95B-SSVi3500	ROTOR NUT LOCKING PLATE / COVER
28H	1489195	28H-SSVi3500	ROTOR BRAKE	98C	1308082	98C-CFT3000	CLUTCH / SLEEVE ASSEMBLY
31	1489196	31-SSVi3500	BAIL ARM SCREW (2 REQUIRED)	98W	1204004	98W-3000PUR	CLUTCH WASHER (2 REQUIRED)
32	1191583	32-2000SG	BAIL SPRING	132	1489224	132-SSVi3500	LINE ROLLER COLLAR
34	1489197	34-SSVi3500	BAIL ARM	132A	1489225	132A-SSVi3500	LINE ROLLER BUSHING
34C	1489198	34C-SSVi3500	PIVOT ARM	226	1489226	226-SSVi3500	REAR COVER
35	1489199	35-SSVi3500	LINE ROLLER	226A	1489227	226A-SSVi3500	REAR COVER SCREW
35A	1489200	35A-SSVi3500	LINE ROLLER BALL BEARING	231	1489241	231-SSVi4500	CROSSWIND OSCILLATION GEAR
36	1191699	36-3000SG	LINE ROLLER SCREW	231A	1489229	231A-SSVi3500	CROSSWIND GEAR BUSHING
38	1489201	38-SSVi3500	ROTOR NUT	231B	1489230	231B-SSVi3500	CROSSWIND OSCILLATION GEAR SCREW
38A	1308069	38A-CFT3000	ROTOR NUT LOCK PLATE SCREW (3 REQUIRED)	231C	1489231	231C-SSVi3500	CROSSWIND GEAR WASHER
				233	1489232	233-SSVi3500	BEARING COVER ASSEMBLY (HANDLE CAP)

MYSTIC REEL PARTS REVISION!

NOTE:

Many of www.mysticparts.com schematics include changes that were either made by Penn, or errors found and corrected by our parts dept.

MRP Ver 102118 (Based on Penn's Rev.1 , 3-7-18)

CORRECTIONS

233C** 1419016 233C-SLA3500 SEAL, HANDLE CAP SEAL

**** NOT ON REV0 BUT WAS FOUND IN THE REEL**

HANDLES

KEY NO	PUREFISHING NO.	PENN PART NO.	DESCRIPTION
15	1489181	15-SSVi3500	HANDLE ASSEMBLY (STOCK HANDLE FOR SSVi4500)
15*	1418975	15-SLA3500	HANDLE (OPTIONAL) (FROM SLAIII SERIES ALL METAL ROUND KNOB)