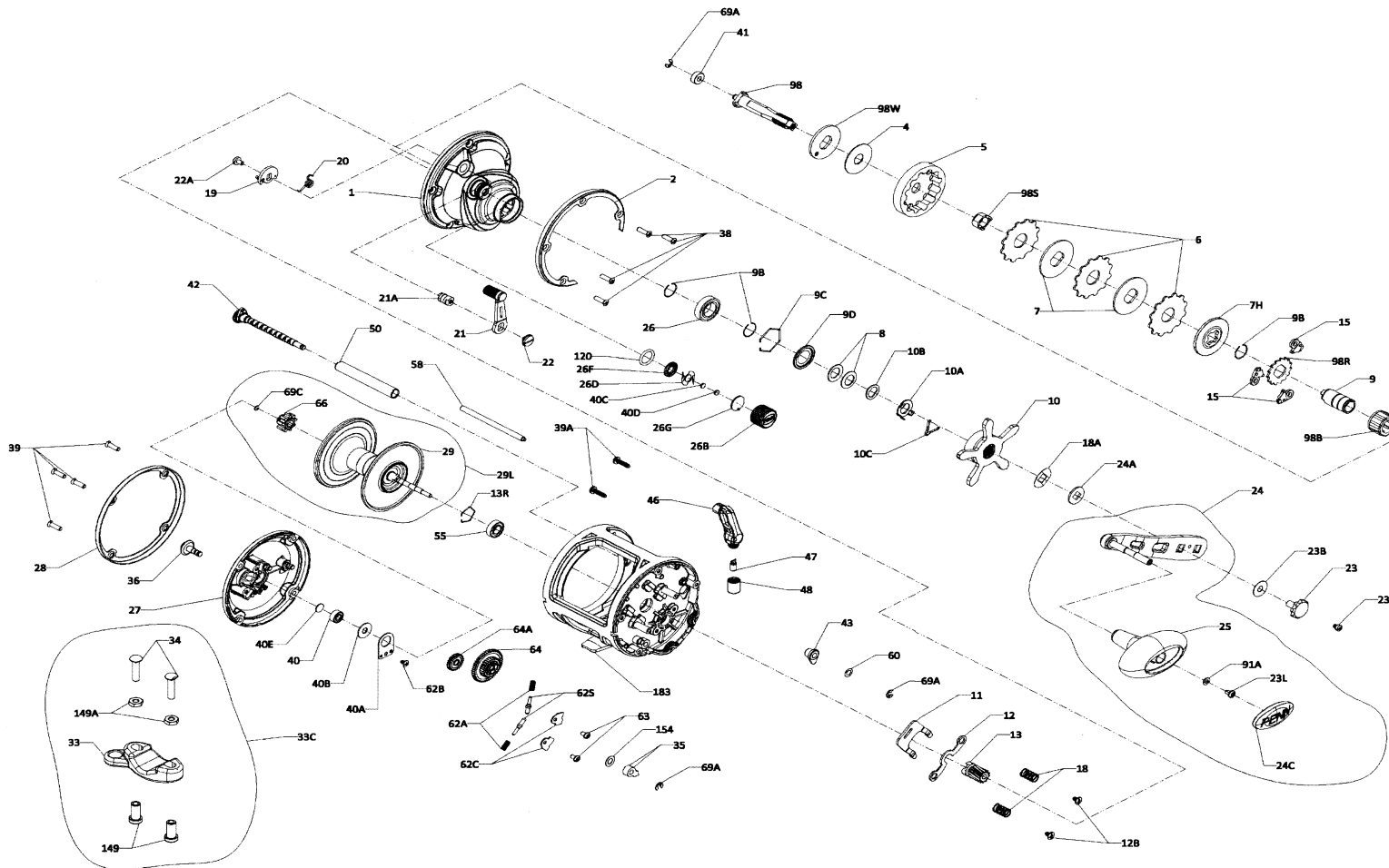




PARTS LIST FOR MODEL
SQUALL II 30LW
REEL PART NO. 1545928

Key No.	Part No.	Penn Style No.	Description Parts List	Key No.	Part No.	Penn Style No.	Description Parts List	Key No.	Part No.	Penn Style No.	Description Parts List
1	1552955	1-SQLII30LW	Right Side Plate	10	1488735	10-FTHII30LW	Star Assembly	20	1188689	20-20	Eccentric Spring
2	1553053	2-SQLII30LW	Side Plate Ring (Smoke)	10A	1188711	10A-20	Star Click Retainer	21	1526449	21-SQLII40SD	Eccentric Lever (Smoke)
4	1488726	4-FTHII30LW	Drag Washer	10B	1188710	10B-20	Star Click Washer	21A	1553068	21A-SQLII30LW	Eccentric Pin
5	1553059	5-SQLII30LW	Main Gear	10C	1188712	10C-525MAG2	Star Click Spring	22	1526450	22-SQLIISD	Eccentric Screw (Smoke)
6	1188705	6-20	Washer, Tab Drag (3 req)	11	1308745	11-SQL15LW	Eccentric Jack	22A	1188690	22-20	Eccentric Screw
7	1488788	7-FTHII20LW	Keyed Metal Drag Washer (2 req)	12	1308778	12-SQL30LW	Yoke	23	1208117	23-20	Handle Screw
7H	1488789	7H-FTHII20LW	Heavy Metal Drag Washer	12B	1526440	12B-SQLIISD	Pinion Yoke Screw (2 req)	23A	1188717	23A-20	Handle Lock Screw
8	1188709	8-20	Spring Washer (2 req)	13	1308779	13-SQL30LW	Pinion	23B	1207784	23B-20	Handle Screw Washer
9	1516200	9-FTHII40SD	Spacer Sleeve	13R	1308780	13R-SQL30LW	Retainer Ring	23L	1191283	23L-750	Screw
9B	1488732	9B-FTHII30LW	Retainer Ring (3 req)	15	1188675	15-20	Anti Reverse Dog (3 req)	24	1526451	24-SQLII40SD	Handle Assembly
9C	1488733	9C-FTHII30LW	Retainer Ring	18	1188688	18-FTHLW20	Pinion Yoke Spring (2 req)	24A	1188715	24A-20	Handle Thrust Washer
9D	1488734	9D-FTHII30LW	Bearing Cover	18A	1188714	18A-20	Keyed Spring Washer	24C	1191335	24C-66	Cap- Handle Knob
				19	1308750	19-SQL15LW	Eccentric	25	1240293	25-TRQ40	Handle Knob



26	1265023	26-TRQ40NLD2	Ball Bearing	26B	1488746	26B-FTHII30LW	Spool Tension Knob	26D	1125769	26D-525MAG2	Click Spring
26F	1125768	26F-525MAG2	Click Plate A	26G	1125772	26G-525MAG2	Click Plate B	27	1553073	27-SQLII30LW	L. Side Plate Assembly
28	1553078	28-SQLII30LW	Side Plate Ring (Smoke)	29	1553084	29-SQLII30LW	Spool (Smoke/Gold)	29L	1553092	29L-SQLII30LW	Spool Assembly
33	1229936	33-113	Rod Clamp	33C	1229936	33C-TRQ40	Rod Clamp Kit	34	1182788	34-45	Screw, Rod Clamp (2 req)
35	1308758	35-SQLLW	Click Tongue	36	1308759	36-SQLLW	Click Button	39	1553143	39-SQLIILW	Screw (8 req)
39A	1553097	39A-SQLIILW	Screw, Thread Cutting (2 req)	40	1188661	40-20	Bearing	40A	1188663	40A-20	Ball Bearing Retainer
40B	1188662	40B-20	Felt Washer	40C	1208115	40C-525MAG2	Washer, Metal Thrust	40D	1125771	40D-525MAG2	Washer, Rubber Thrust
40E	1308762	40E-SQLLW	Bronze Washer	41	1308763	41-SQL15LW	Bushing	42	1188725	42-25	Worm Shaft Assembly (20)
43	1188669	43-20	Worm Shaft Bushing	46	1208129	46-40	Line Guide Assembly	47	1188672	47-20	Line Guide Pawl
48	1208120	48-20	Line Guide Nut (Gold)	50	1188728	50-25	Worm Shield	55	1308787	55-SQL30LW	Ball Bearing
58	1308788	58-SQL30LW	Line Guide Post	60	1188670	60-20	Worm Shaft Washer	62A	1184033	62A-310	Spring Click (2 req)
62B	1188722	62B-SQLLW	Screw	62C	1184041	62C-321LH	Click Spring Cover (2 req)	62S	1308765	62S-SQLLW	Click Pin (2 req)
63	1184052	63-500S	Click Spring Screw (2 req)	64	1488762	64-FTHII30LW	Idler Gear	64A	1208073	64A-40	Idler Gear
64A	1208073	64A-40	Idler Gear	66	1188678	66-20	Spool Gear, Click Ratchet	69A	1188659	69A-20	Retainer (3 req)
69C	1188677	69C-20	Retainer "C" Ring	91A	1277514	91A-TRQ40NLD2	Handle Knob Washer	98	1553098	98-SQLII30LW	Main Gear Shaft
98B	1488764	98B-FTHII30LW	IAR Bearing	98W	1516218	98W-FTHII30LW-1	Thrust Washer	98S	1488766	98S-FTHII30LW	Gear Stud Bushing
98R	1488765	98R-FTHII30LW	Ratchet	120	1184522	120-113H	O-Ring	149	1184702	149-45	Rod Clamp Nut (2 req)
149A	1184706	149-200	Hex Nut (2 req)	154	1184721	154-117	Click Button Washer	183	1553110	183-SQLII30LW	Frame Assembly