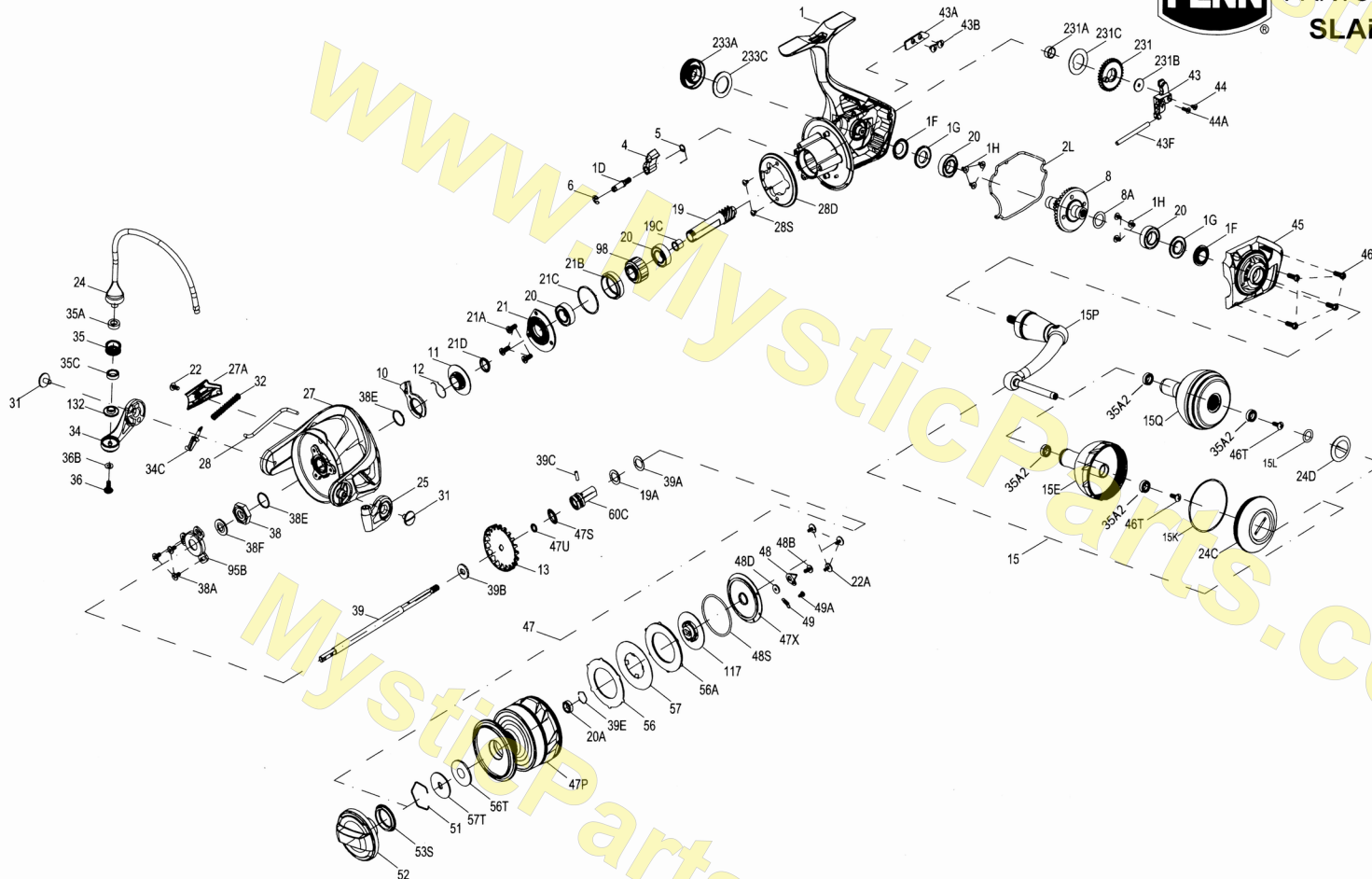




PARTS LIST FOR MODEL SLAMMER IV 8500HS  
SLAiv8500HS (1545770) (HIGH SPEED)

mysticparts.com  
**MYSTIC  
REEL PARTS**  
965 Radio Road  
Little Egg Harbor, NJ 08087  
+1 (609) 296-1300  
www.mysticparts.com  
customerservice@mysticparts.com

**MRP Ver. 053122**  
(based on Penn's Rev. 01 4-21-21)



Penn Reel Parts list for Model: SLAiv8500HS (1545770) SLAMMER iv SPINNING

\*\* MANUAL BAIL TRIP \*\*

0	PUREFISHING PART			KEY
NO	NO	NO.	DESCRIPTION	NO
1	1559391	1-SLAiv8500HS	BODY/HOUSING (HIGH SPEED)	39C
1D	1277140	1D-SSV7500	A/R PAWL POST	39E
1F	1419083	1F-SLA7500	BODY BALL BEARING SEAL (2 REQUIRED)	43
1G	1419082	1G-SLA7500	BODY SIDE SEAL LOCK PLATE (2 REQUIRED)	43A
1H	1418957	1H-SLA3500	BODY SIDE SCREW (6 REQUIRED)	43B
2L	1419086	2L-SLA7500	BODY SEAL	43F
4	1277142	4-SSV7500	A/R PAWL POST	44
5	1277143	5-SSV7500	PAWL SPRING	44A
6	1277144	6-SSV7500	RETAINER CLIP	45
8	1447682	8-SLAiii8500HS	DRIVE GEAR (MAIN GEAR) (CNC BRASS TECH) (HIGH SPEED) 5.3:1	46
8A	1277037	8A-SSV5500	DRIVE GEAR SHIM WASHER	47
10	1277147	10-SSV7500	A/R PAWL HOLDER	47P
11	1559343	11-SLAiv7500	A/R BUSHING	47S
12	1309001	12-SSV9500	A/R BUSHING SPRING	47U
13	1419089	13-SLA7500	CLICK GEAR	47X
19	1447685	19-SLAiii8500HS	PINION GEAR (CNC BRASS TECH) (HIGH SPEED) 5.3:1	48
19A	1277424	19A-SLA3500	WASHER, AT SPOOL SUPPORT SLEEVE	48B
19C	1419092	19C-SLA7500	PINION GEAR BUSHING	48D
20	1277152	20-SSV7500	BALL BEARING (4 REQUIRED)	48S
20A	1385530	20A-CLA3000	SEALED BALL BEARING	49
21	1559345	21-SLAiv7500	BALL BEARING RETAINER	49A
21A	1277154	21A-SSV7500	PINION RETAINER SCREW (3 REQUIRED)	51
21B	1419094	21B-SLA7500	PINION BALL BEARING COLLAR	52
21C	1385684	21C-CLA8000	O-RING	53S
21D	1559346	21D-SLAiv7500	SEAL	56
22	1277046	22-SSV5500	ROTOR COVER SCREW	56A
22A	1496533	22A-SLA7500	DRAG COVER SCREW (3 REQUIRED)	56T
27	1559381	27-SLAiv8500	ROTOR	57
27A	1559349	27A-SLAiv7500	ROTOR COVER	57T
28	1559382	28-SLAiv8500	ROTOR TRIP LEVER	60C
28D	1277161	28D-SSV7500	ROTOR BRAKE	95B
28S	1277054	28S-SSV5500	ROTOR BRAKE SCREW (2 REQUIRED)	98
31	1277055	31-SSV5500	BAIL ARM SCREW (2 REQUIRED)	117
32	1559351	32-SLAiv7500	BAIL SPRING	231
34	1385667	34-CLA8000	BAIL ARM	231A
34C	1277164	34C-SSV7500	PIVOT ARM	231B
38	1419103	38-SLA7500	ROTOR NUT	231C
38A	SEE PROBLEMS FOUND PAGE 3			233A
38E	1302502	232B-SSV3500	PINION GEAR SEAL	233C
38F	1419080	38F-SLA7500	ROTOR-MAIN SHAFT SEAL	
39	1559352	39-SLAiv7500	MAIN SHAFT	
39A	1559353	39A-SLAiv7500	WASHER, FOR SPOOL SHAFT SLEEVE	
39B	1277067	39B-SSV5500	WASHER, FOR MAIN SHAFT BELOW CLICK GEAR	

NO	NO	NO.	DESCRIPTION
39C	1559354	39C-SLAiv7500	PIN
39E	1559277	39E-SLAiv5500	RETAINER
43	1419105	43-SLA7500	OSCILLATION SLIDER (CROSSWIND BLOCK)
43A	1277173	43A-SSV7500	OSCILLATION SLIDER GUIDE
43B	1277070	43B-SSV5500	SCREW, AT ROTOR COVER AND CROSSWIND PLATE (2 REQUIRED)
43F	1389567	43F-CLA6000	GUIDE SHAFT
44	1385672	44-CLA8000	SCREW, FOR MAIN SHAFT
44A	1447691	44A-SLAiii8500HS	BODY COVER ASSEMBLY
45	1559383	45-SLAiv8500HS	BODY COVER ASSEMBLY
46	1277074	46-SSV5500	BODY COVER SCREW (4 REQUIRED)
47	1559394	47-SLAiv8500HS	SPOOL ASSEMBLY (HIGH SPEED)
47P	1559395	47P-SLAiv8500HS	SPOOL (BARE) (HIGH SPEED)
47S	1494699	47S-SSV12500LL	SPOOL SEAL
47U	1525247	47U-CLAi5000	DRAG COVER SEAL
47X	1559358	47X-SLAiv7500	DRAG COVER
48	1419069	48-SLA5500	SPOOL CLICK PLATE
48B	1385581	48B-CLA3000	SPOOL CLICKER SPRING SCREW
48D	1385579	48D-CLA3000	SPOOL CLICKER SPACER RING
48S	1559359	48S-SLAiv7500	SEAL, FOR DRAG COVER
49	1259579	49-7000AF	SPRING
49A	1559283	49A-SLAiv5500	SCREW (2 REQUIRED)
51	1277085	51-SSV5500	DRAG WASTER RETAINER
52	1559396	52-SLAiv8500HS	DRAG KNOB ASSEMBLY (HIGH SPEED)
53S	1339555	53S-CLA5000	DRAG KNOB SEAL
56	1419077	56-SLA7500	DRAG FRICTION WASHER
56A	1419078	56A-SLA7500	DRAG FRICTION WASHER
56T	1277089	56T-SSV5500	DRAG FRICTION WASHER
57	1559361	57-SLAiv7500	KEYED DRAG WASHER
57T	1419058	57T-SLA5500	KEYED DRAG WASHER
60C	1559362	60C-SLAiv7500	SPOOL SUPPORT SLEEVE
95B	1419114	95B-SLA7500	ROTOR NUT LOCKING PLATE
98	1277190	98-SSV7500	CLUTCH/SLEEVE ASSEMBLY
117	1559363	117-SLAiv7500	DRAG DRIVE PLATE
231	1419117	231-SLA7500	OSCILLAION GEAR (CROSSWIND GEAR)
231A	1339566	231A-CLA5000	OSCILLATION GEAR BUSHING
231B	1277100	231B-SSV5500	OSCILLATION GEAR SCREW
231C	1389603	231C-CLA6000	OSCILLATION GEAR WASHER
233A		233A-SLAiv7500	HANDLE CAP
233C	1419076	233C-SLA5500	HANDLE CAP WASHER

NOTE: MYSTIC REEL PARTS REVISION!

Many of www.mysticparts.com schematics include changes that were either made by Penn, or errors found and corrected by our parts dept.

MRP Ver. 053122 (based on Penn's Rev. 00 4-20-21)

See Page 3 for all HANDLE components

See Page 3 for all BAIL WIRE components

There are no line clips on the 7500 thru 10500 reel sizes

## HANDLE ASSEMBLY AND COMPONENT INFO FOR THE TWO TYPES OF HANDLES

### METAL KNOB HANDLE COMPONENTS

KEY NO	PUREFISHING PART NO.		DESCRIPTION
15	1559392	15-SLAiv8500HS	HANDLE ASSEMBLY (METAL KNOB) (HIGH SPEED)
15E	1559264	15E-SLAiv5500	HANDLE KNOB (METAL)
15K	1419073	15K-SLA5500	HANDLE KNOB CAP SEAL
15P	1422396	15P-SLA7500	SUB-HANDLE ASSEMBLY
24C	1559339	24C-SLAiv6500HS	HANDLE KNOB CAP (FOR METAL KNOB) (HIGH SPEED)
35A2	1377606	35A-BTLI8000LC	KNOB BALL BEARING (2 REQUIRED)
46T	1341500	3-SSV7500LC	SCREW

### FOAM KNOB HANDLE COMPONENTS

KEY NO	PUREFISHING PART NO.		DESCRIPTION
15	N/A	N/A	FOAM HANDLE NOT AVAILABLE PRE-ASSEMBLED
15Q	1559265	15Q-SLAiv5500	HANDLE KNOB (FOAM) ** CORRECT # USE THIS! **
15L	1417804	15L-CLA2000	HANDLE KNOB SEAL
15P	1422396	15P-SLA7500	SUB-HANDLE ASSEMBLY
24D	1417808	24C-CLA5000	HANDLE KNOB CAP (FOR FOAM KNOB)
35A2	1377606	35A-BTLI8000LC	KNOB BALL BEARING (2 REQUIRED)
46T	1341500	3-SSV7500LC	SCREW

#### 15Q note

On rev00 schematic, 15Q was incorrectly listed as 1418244 15E-CLA6000, WHICH IS NOT THE CORRECT # DO NOT USE IT

### PROBLEMS FOUND AND CORRECTED

38A	4426326	24-ORRA-S10	SCREW (3 REQUIRED) ** INCORRECT PART NUMBER DO NOT USE
	1277063	38A-SSV5500	SCREW (3 REQUIRED) ** USE THIS PART

### LINKS

PARTS: <https://www.mysticparts.com/PennParts/PennSLAiv8500HS.aspx>

HS Conversion Parts:

<https://www.mysticparts.com/PennParts/Parts/CONVERSION/SLAiv8500to8500HSinfo.aspx>

## BAIL WIRE, LINE ROLLER PARTS CORRECTED FOR REV00

On rev00 SLAiv Penn accidentally carried over some of the early design from the SLAiii7500 reel

The below parts are NOT actually ON the reels

This applies to the SLAiv7500, SLAiv8500, SLAiv8500HS and SLAiv10500

**DO NOT use the parts below!**

THEY ARE JUST HERE FOR REFERENCE PURPOSES ONLY

KEY NO	PUREFISHING PART NO.		DESCRIPTION
35	1277165	35-SSV7500	LINE ROLLER *** DO NOT USE ***
35A	1419050	35A-SLA5500	LINE ROLLER BUSHING *** DO NOT USE ***
132	1419163	132-SLA9500	LINE ROLLER COLLAR *** DO NOT USE ***

BELOW ARE THE PARTS ACTUALLY CONFIRMED

TO BE IN THE REV00 SLAiv REELS

This applies to the SLAiv7500, SLAiv8500, SLAiv8500HS and SLAiv10500

**USE THE PARTS BELOW!**

KEY NO	PUREFISHING PART NO.		DESCRIPTION
24	1559380	24-SLAiv8500	BAIL WIRE
35	1457805	35-SLAiii8500HS	LINE ROLLER
35A	1457806	35A-SLAiii8500HS	LINE ROLLER BUSHING
35C	1559273	35A-SLAiv5500	LINE ROLLER BALL BEARING
132	1457807	132-SLAiii8500HS	LINE ROLLER COLLAR
36	1277166	36-SSV7500	LINE ROLLER SCREW
36B	1417809	36B-CLA5000	BAIL ARM SCREW WASHER (OLD 36B-CLA5000)
25	1385663	25-CLA8000	BAIL HOLDER

### REGULAR TO (HIGH SPEED) SLAiv8500 TO SLAiv8500HS CONVERSION AND VISA VERSA

USE THE BLUE PARTS AND NOTES marked "(HIGH SPEED)" FOR REFERENCE

**NOTE:** Full conversion if you want the reel to look and say it's the SLAiv4500HS is all of the blue text parts marked (HIGH SPEED)

However, the differences between them are cosmetic EXCEPT FOR THE GEARING and SPOOL

USE THE MAIN 8, PINION 19 and SPOOL 47 (HIGH SPEED) PARTS to do basic conversion to High Speed