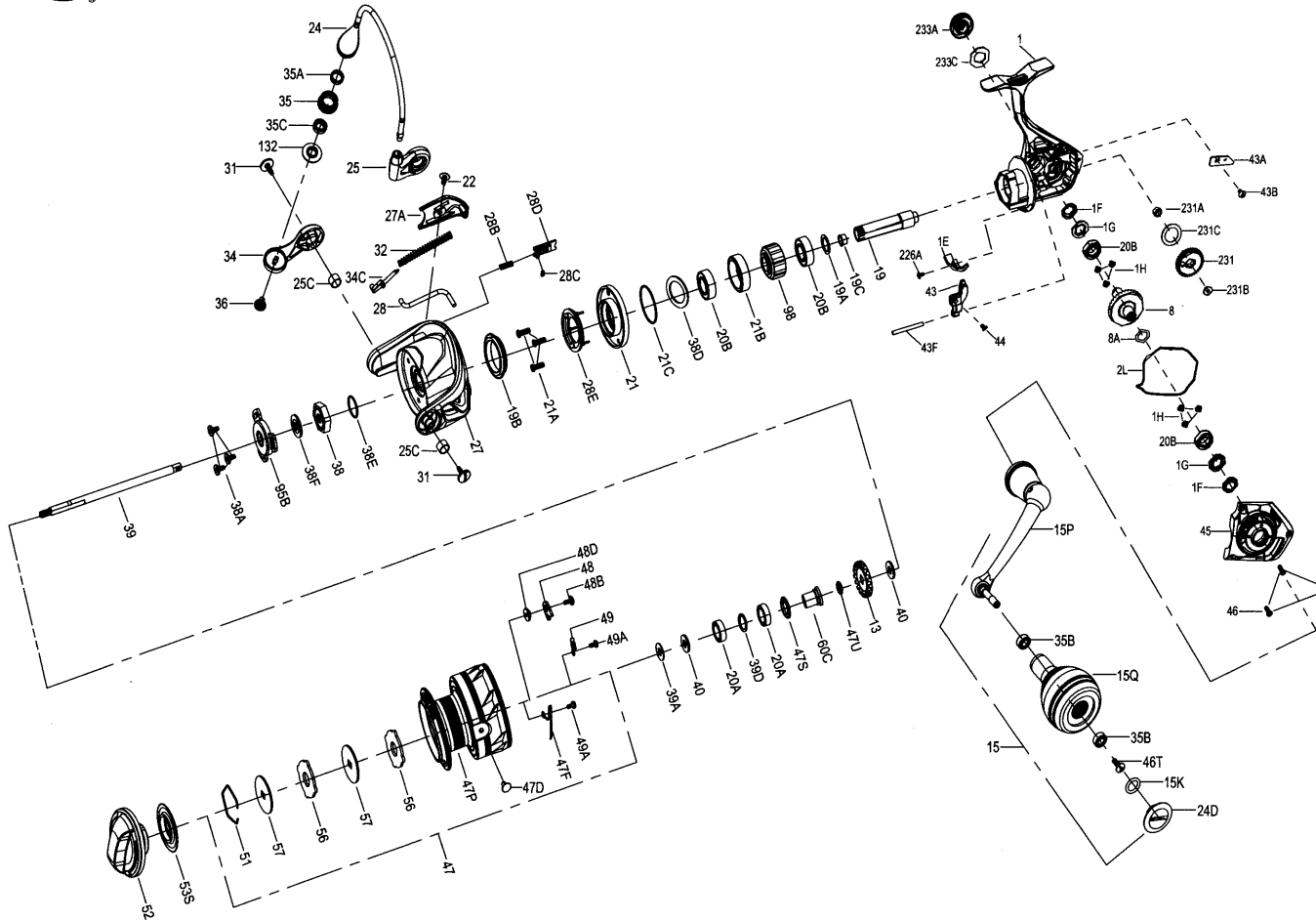




PARTS LIST FOR MODEL SLAMMER IV2500DX



KEY NO.	PART NO.	PENN STYLE NO.	DESCRIPTION
28C	1385547	28C-CLA3000	Rotor Brake Seal
28D	1525152	28D-CLAI12000	Rotor Brake
28E	1559156	28E-SLAIV2500	Rotor Brake Slice
31	1385619	31-CLAI11000	Bail Arm Screw(2 req)
32	1525910	32-CLAI12000	Bail Spring
34	1559186	34-SLAIV2500DX	Bail Arm
34C	1385621	34C-CLA2000	Bail Arm Lever
35	1525154	35-CLAI12000	Line Roller
35A	1474155	35A-SLAI13500	Line Roller Bushing
35B	1418393	35B-CLA3000	Ball Bearing(2 req)
35C	1525199	35C-CLAI13000	Bearing
36	1389419	36-CLA2000	Line Roller Screw
38	1418993	38-SLA3500	Rotor Nut
38A	1385554	38A-CLA2000	Screw(3 req)
38D	1559205	38D-SLAIV3500	Washer
38E	1418958	38E-SLA3500	Pinion Gear Seal
38F	1418959	38F-SLA3500	Rotor-Main Shaft Seal
39	1559187	39-SLAIV2500DX	Main Shaft
39A	1494694	39A-SSV12500LL	Washer
39D	1257343	39D-SSV12500LL	Washer
40	1422917	40-SLA3500	Washer(2 req)
43	1559159	43-SLAIV2500	Oscillation Slider
43A	1559160	43A-SLAIV2500	Slider Retainer Plate
43B	1559161	43B-SLAIV2500	Screw
43F	1559162	43F-SLAIV2500	Guide Shaft
44	1525911	44-CLAI13000	Screw
45	1559188	45-SLAIV2500DX	Body Cover Assembly
46	1385567	46-CLA3000	Body Cover Screw(3 req)
46T	1341500	46T-SSV7500LC	Screw
47	1559189	47-SLAIV2500DX	Spool Assembly
47D	1276953	47D-SSV3500	Line Clip
47F	1385637	47F-CLA2000	Line Clip Retainer
47P	1559190	47P-SLAIV2500DX	Spool
47S	1494699	47S-SSV12500LL	Seal
47U	1494700	47U-SSV12500LL	Seal
48	1385578	48-CLA3000	Spool Clicker Plate
48B	1385581	48B-CLA3000	Spool Clicker Spring Screw
48D	1385579	48D-CLA3000	Spool Clicker Spacer Ring
49	1385580	49-CLA3000	Spool Clicker Spring
49A	1341547	49A-SSV7500LC	Spool Clicker Spring Screw(2 req)
51	1277085	51-SSV5500	Drag Washer Retainer
52	1559191	52-SLAIV2500DX	Drag Knob Assembly
53S	1447888	53S-CFT113000	Drag Knob Seal
56	1385584	56-CLA3000	Drag Friction Washer(2 req)
57	1525213	57-CLAI13000	Washer(2 req)
60C	1559192	60C-SLAIV2500DX	Spool Support Sleeve
95B	1419009	95B-SLA3500	Rotor Nut Locking Plate
98	1559168	98-SLAIV2500	Clutch/Sleeve Assembly
132	1525167	132-CLAI12000	Line Roller Collar
226A	1525914	226A-CLAI13000	Screw
231	1559169	231-SLAIV2500	Oscillation Gear
231A	1385595	231A-CLAI12000	Oscillation Gear Bushing
231B	1307857	231B-SSV3500	Oscillation Gear Screw
231C	1559170	231C-SLAIV2500	Washer
233A	1559237	233A-SLAIV3500DX	Handle Cap
233C	1419016	233C-SLA3500	Handle Cap Seal
19C	1418978	19C-SLA3500	Pinion Gear Bushing
20A	1385530	20A-CLA3000	Bearing(2req.)
20B	1385532	20A-CLA3000	Bearing(4req.)
21	1559152	21-SLAIV2500	Bail Bearing Retainer
21A	1418980	21A-SLA3500	Retainer Screw(3 req)
21B	1525147	21B-CLAI12000	Pinion Ball Bearing Collar
21C	1385605	21C-CLA2000	Body Head Seal
22	1092845	22-CLA2000	Rotor Cover Screw
24	1559153	24-SLAIV3500	One Piece Bail
24D	1417808	24C-CLAI13000	Handle Knob Cap
25	1559183	25-SLAIV2500DX	Bail Holder
25C	1188261	25C-CLA2000	Bail Holder Bushing(2 req.)
27	1559184	27-SLAIV2500DX	Rotor
27A	1559185	27A-SLAIV2500DX	Rotor Cover
28	1525175	28-CLAI12500	Rotor Trip Lever
28B	1346982	28B-CLA2000	Rotor Brake Spring

KEY NO.	PART NO.	PENN STYLE NO.	DESCRIPTION
1	1559178	1-SLAIV2500DX	Body Assembly
1E	1525142	1E-CLAI12000	Body Slope
1F	1418955	1F-SLA3500	Body Ball Bearing Seal(2req.)
1G	1418956	1G-SLA3500	Body Side Seal Lock Plate(2req.)
1H	1418957	1H-SLA3500	Body Side Screw(6req.)
2L	1559038	2L-SLAIV2500	Body Seal
8	1559179	8-SLAIV2500DX	Drive Gear
8A	1418973	8A-SLA3500	Drive Gear Shim Washer
13	1418974	13-SLA3500	Click Gear
15	1559180	15-SLAIV3500DX	Handle Assembly
15K	1447871	15L-CFT113000	Handle Knob Seal
15P	1559225	15P-SLA2500DX	Sub-Handle Assembly
15Q	1559181	15Q-SLAIV2500DX	Handle Knob Assembly
19	1559182	19-SLAIV2500DX	Pinion Gear
19A	1277424	19A-SSV3500	Pinion Gear Washer
19B	1559267	21D-SLAIV5500	Seal

KEY NO.	PART NO.	PENN STYLE NO.	DESCRIPTION
19C	1418978	19C-SLA3500	Pinion Gear Bushing
20A	1385530	20A-CLA3000	Bearing(2req.)
20B	1385532	20A-CLA3000	Bearing(4req.)
21	1559152	21-SLAIV2500	Bail Bearing Retainer
21A	1418980	21A-SLA3500	Retainer Screw(3 req)
21B	1525147	21B-CLAI12000	Pinion Ball Bearing Collar
21C	1385605	21C-CLA2000	Body Head Seal
22	1092845	22-CLA2000	Rotor Cover Screw
24	1559153	24-SLAIV3500	One Piece Bail
24D	1417808	24C-CLAI13000	Handle Knob Cap
25	1559183	25-SLAIV2500DX	Bail Holder
25C	1188261	25C-CLA2000	Bail Holder Bushing(2 req.)
27	1559184	27-SLAIV2500DX	Rotor
27A	1559185	27A-SLAIV2500DX	Rotor Cover
28	1525175	28-CLAI12500	Rotor Trip Lever
28B	1346982	28B-CLA2000	Rotor Brake Spring