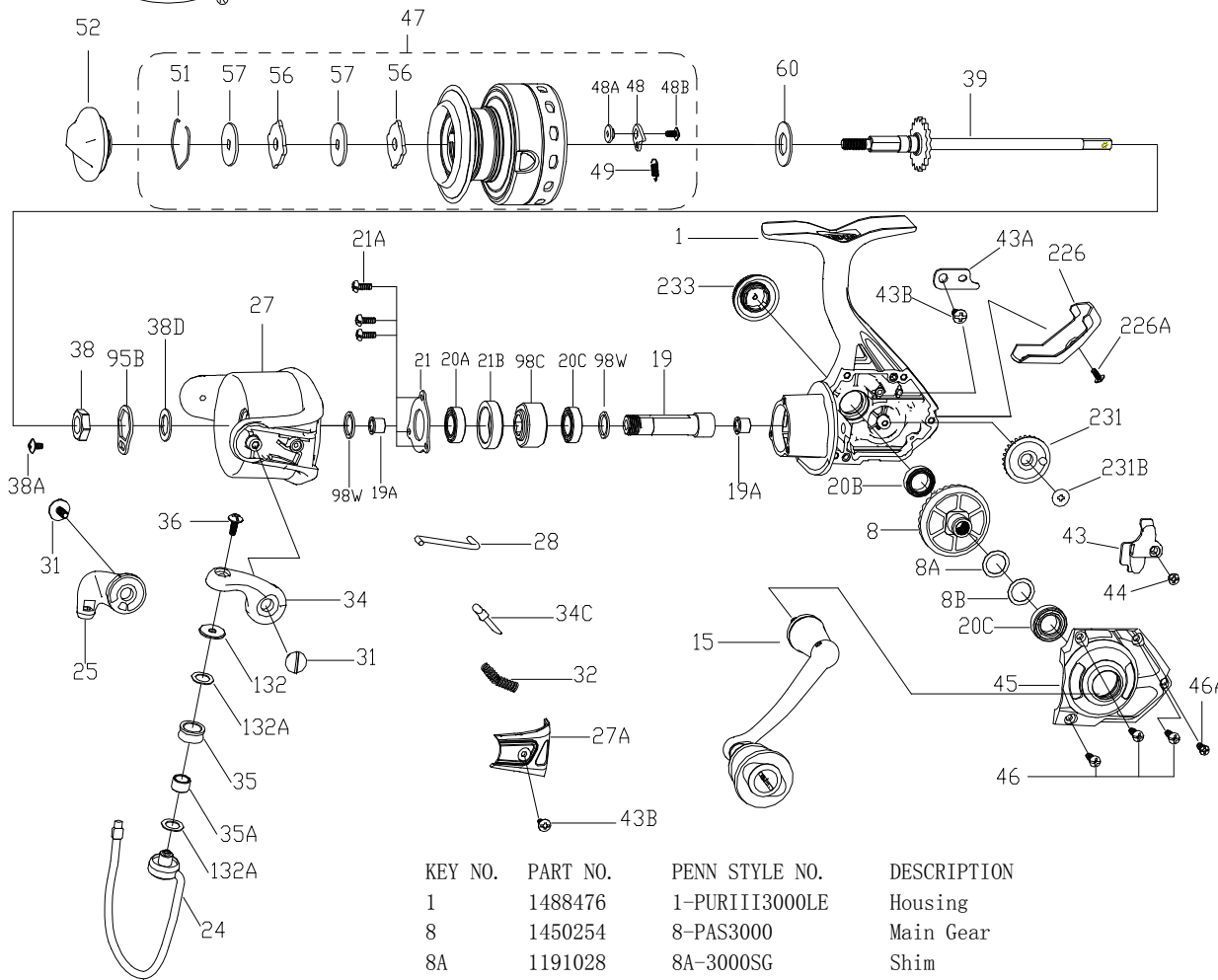




PARTS LIST FOR MODEL AS PURIII3000LE



KEY NO.	PART NO.	PENN STYLE NO.	DESCRIPTION
24	1308054	24-CFT3000	Bail Wire
25	1308056	25-CFT3000	Bail Holder
27	1485210	27-PURIII3000	Rotor
27A	1308059	27A-CFT3000	Bail Pivot Cover
28	1308061	28-CFT3000	Trip Lever
31	1308063	31-CFT3000	Bail Arm Screw(2 req)
32	1191586	32-3000SG	Bail Spring
34	1308064	34-CFT3000	Bail Arm
34C	1308065	34C-CFT3000	Pivot Arm
35	1308066	35-CFT3000	Line Roller
35A	1308067	35A-CFT3000	Line Roller Bushing
36	1191699	36-3000SG	Bail Stud Screw
38	1203994	38-3000PUR	Rotor Nut
38A	1308069	38A-CFT3000	Rotor Locking Plate Screw
38D	1308070	38D-CFT3000	Rotor Nut Washer
39	1365725	39-FRCII3000	Main Shaft Assembly
43	1485219	43-PURIII3000	Crosswind Block
43A	1191818	43A-3000SG	Crosswind Block Plate
43B	1203997	43B-3000PUR	Screw(2 req)
44	1191843	44-3000SG	Crosswind Block Screw
45	1485213	45-PURIII3000	Housing Cover
46	1485201	46-PURIII3000	Housing Cover Screw (3 req)
46A	1485202	46A-PURIII3000	Housing Cover Screw
47	1488482	47-PURIII3000LE	Spool Assembly
48	1211604	48-3000SG	Click Tongue
48A	1214226	48A-3000SG	Click Tongue Washer
48B	1214189	48B-3000SG	Spool Click Screw
49	1211605	49-3000SG	Click Tongue Spring
51	1308078	51-CFT3000	Drag Retaining Ring
52	1485221	52-PURIII3000	Drag Knob Assembly
56	1485222	56-PURIII3000	Drag Washer (2 req)
57	1192043	57-3000SG	Keyed Washer (2 req)
60	1192060	60-3000SG	Thrust Washer
95B	1308081	95B-CFT3000	Rotor Locking Plate
98C	1192212	98C-3000SG	Clutch/Sleeve Assembly
98W	1204004	98W-3000PUR	Washer(2 req)
132	1192296	132-3000SG	Roller Washer
132A	1192302	132A-3000SG	Line Roller Washer (2 req)
226	1485215	226-PURIII3000	Rear Cover
226A	1485216	226A-PURIII3000	Rear Cover Screw
231	1485217	231-PURIII3000	Crosswind Gear
231B	1485218	231B-PURIII3000	Screw Crosswind Gear
233	1489169	233-PURIII2500LE	Bearing Cover Assembly

KEY NO.	PART NO.	PENN STYLE NO.	DESCRIPTION
1	1488476	1-PURIII3000LE	Housing
8	1450254	8-PAS3000	Main Gear
8A	1191028	8A-3000SG	Shim
8B	1485199	8B-PURIII3000	Shim B
15	1488475	15-PURIII3000LE	Handle Assembly
19	1489170	19-PURIII3000LE	Pinion Gear
19A	1191252	19A-3000SG	Bushing(2 req)
20A	1203973	20A-3000PUR	Ball Bearing
20B	1203974	20B-3000PUR	Ball Bearing
20C	1203975	20C-3000PUR	Ball Bearing (2 req)
21	1308052	21-CFT3000	Bearing Retainer
21A	1485211	21A-PURIII3000	Bearing Retainer Screw (3 req)
21B	1192648	21B-3000SG	Collar

407-PURIII3000LE Rev. 0-11-28-17
 Correction
 1481328 Rev. 1 04-11-18