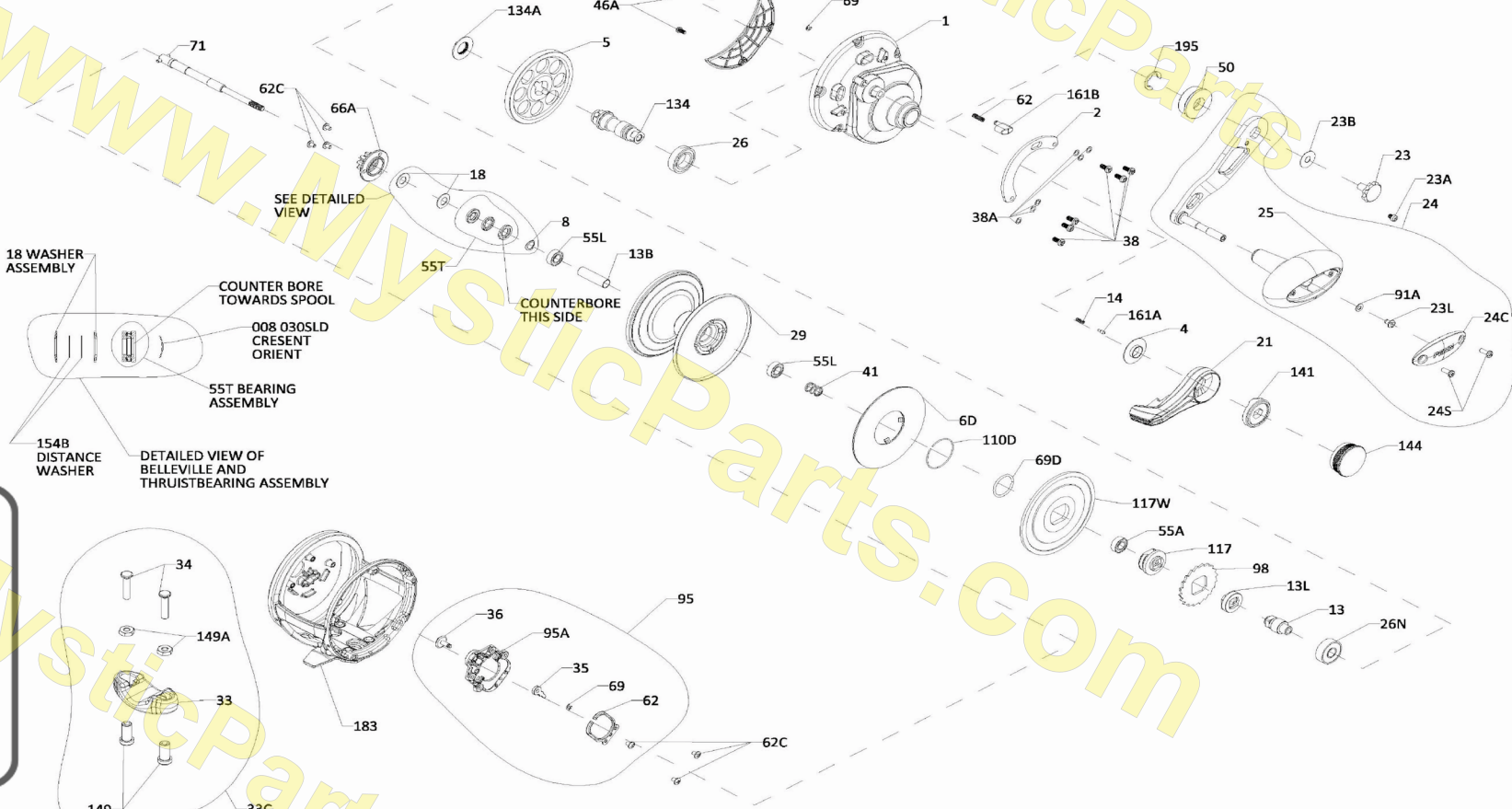




PARTS LIST FOR MODEL  
FATHOM II 40NLD  
REEL PART NO. 1578244  
FTHii40NLD



18 WASHER ASSEMBLY

COUNTER BORE TOWARDS SPOOL

008 030SLD CRESENT ORIENT

55T BEARING ASSEMBLY

COUNTERBORE THIS SIDE

154B DISTANCE WASHER

DETAILED VIEW OF BELLEVILLE AND THRUSTBEARING ASSEMBLY

mysticparts.com  
**MYSTIC REEL PARTS**  
965 Radio Road  
Little Egg Harbor, NJ 08087  
+1 (609) 296-1300  
www.mysticparts.com  
customerservice@mysticparts.com

MRP Ver. 070123

(based on Penn's Rev. 0 2-17-22)

# Penn Reel Parts list for Model: Fathom Leverdrag FTHii40NLD (Silver / Black) 2nd Generation

KEY	PUREFISHING	PENN		KEY	PUREFISHING	PENN	
<u>NO</u>	<u>7 Digit PART #</u>	<u>PART #</u>	<u>DESCRIPTION</u>	<u>NO</u>	<u>7 Digit PART #</u>	<u>PART #</u>	<u>DESCRIPTION</u>
1	1580535	1-FTHii40NLD	HANDLE SIDE PLATE	41	1265056	41-TRQ40NLD2	SPRING, DRAG DISENGAGING
1D	1580171	1D-FTHii40NLD2	GEAR BOX COVER	46A	1488755	46A-FTHii30LW	SCREW, COVER (2 REQUIRED)
2	1580175	2-FTHii40NLD2	QUADRANT RING	50	1309889	50-FTH60LD2	GEAR SHIELD
4	1264978	4-TRQ15LD2	LEVER WASHER	55A	1238912	55A-50SLD	BALL BEARING (NON-HANDLE SIDE PLATE)
5	1338140	5-FTH40NLD	MAIN GEAR	<b>55L SEE CORRECTIONS</b>			
8	1257843	8-30SLD	SPRING WASHER	55T	1238913	55T-30SLD	BEARING ASSEMBLY
13	1338144	13-FTH40NLD	PINION	62	1188664	62-FTH20LW	CLICK SPRING
13B	1309869	13B-FTH40NLD2	SPOOL SLEEVE	62A	1236596	62-TRQ40	SPRING, STRICK BUTTON
13L	1338146	13L-FTH40NLD	SPACER	62C	1188654	62C-FTH20LW	SCREW (4 REQUIRED)
14	1181406	14-535	SPRING, DRAG LEVER PIN	66A	1265059	66A-FTHLD	CLICK RATCHET
15	1229374	15-TRQ40	DOG ASSEMBLY (2 REQUIRED)	69	1188657	69-FTH20LW	RETAINING E-RING (3 REQUIRED)
15A	1580194	15A-FTHiILD	RETAINER FOR ANTI REVERSE DOG	69D	1265060	69D-FTH15LD	RETAINING RING, DRAG
18	1265001	18-TRQ40NLD2	WASHER, SPRING (2 REQUIRED)	71	1580234	71-FTHii40NLD2	SPOOL SPINDLE
21	1580198	21-FTHii40NLD2	LEVER DRAG (BLACK)	91A	1277514	91A-TRQ40NLD2	HANDLE KNOB WASHER
23	1208117	21-FTH20LW	HANDLE SCREW REV 0 ERROR	95	1580237	95-FTHiILD2	CLICK MODULE ASSEMBLY
23A	1188717	23-FTH20LW	HANDLE LOCK SCREW REV 0 ERROR	95A	1580238	95A-FTHiILD2	CLICK MODULE HOUSING
23B	1207784	23B-FTH20LW	HANDLE NUT WASHER	98	1265073	98-FTH40NLD2	DOG RATCHET
23L	1191283	23L-750	HANDLE KNOB SCREW	110D	1309895	110D-FTH15LD2	RETAINING RING
24	1580205	24-FTHiILD	HANDLE ASSEMBLY (SILVER/BLACK)	117	1309896	117-FTH15LD2	DRIVE PLATE
24C	1286717	24C-SQL50LW	HANDLE KNOB CAP	117A	1309899	117A-FTH40NLD2	DRAG WASHER (ASSEMBLY)
24S	1265021	24S-TRQ40NLD2	SCREW (2 REQUIRED)	117W	1309902	117W-FTH40NLD2	DRAG WASHER, METAL
25	1286716	25-SQL50	HANDLE KNOB	134	1338160	134-FTH40NLD	GEAR STUD
26	1265023	26-TRQ40NLD2	BALL BEARING	134A	1265086	134A-30SLD2	GEAR STUD NUT
26N	1182145	26N-25	BALL BEARING	141	1580246	141-FTHiILD	CAM FOLLOWER
29	1580214	29-FTHii40NLD2	SPOOL (SILVER/BLACK)	144	1580247	144-FTHiILD	PRESET KNOB ASSEMBLY
33	1290729	33-TRQ	ROD CLAMP ALUMINUM	149	1184702	149-45	ROD CLAMP NUT (2 REQUIRED)
33C	1580218	33C-FTHiILD2	ROD CLAMP KIT	149A	1184706	149-200	ROD CLAMP HEX NUT (2 REQUIRED)
34	1580220	34-FTHiILD2	ROD CLAMP SCREW (2 REQUIRED)	154B	1309903	154B-FTH25NLD2	BELLEVILLE DISTANCE WASHER (2 REQUIRED)
35	1188656	35-FTH20LW	CLICK TONGUE	161A	1265098	161A-TRQ15LD2	PIN, LEVER CLICK
36	1516151	36-FTHii15SD	CLICK BUTTON	161B	1265099	161B-TRQ40NLD2	STRIKE BUTTON
38	1309885	38-FTH15LD	SCREW (5 REQUIRED)	<b>183 SEE CORRECTIONS</b>			
38A	1188649	38A-FTH20LW	FLAT WASHER (5 REQUIRED)	195	1184955	195-40	GEAR STUD RET. E-RING

## ERRORS / CORRECTIONS

**55L 1286985 55L-FTH20LD2 BALL BEARING (SPOOL) (2 REQUIRED)  
ON THE DRAWING, NOT ON REV 0 PARTS LIST**

**183 1580259 183-FTHii40NLD2 FRAME ASSEMBLY WRONG ERROR REV 0  
183-FTHii40NLD NEEDS THIS ONE!**

**NO CORRECT 7 DIGIT CODE YET**

## **MYSTIC REEL PARTS REVISION!**

NOTE:

Many of www.mysticparts.com schematics include changes that were either made by Penn, or errors found and corrected by our parts dept.

MRP Ver. 070123 (based on Penn's Rev. 0 2-17-22)