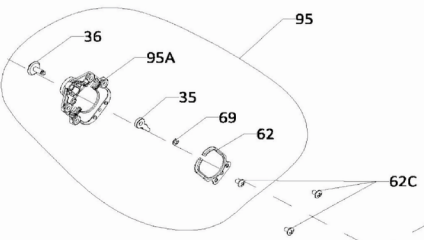
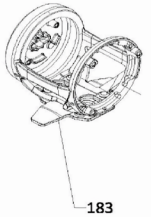
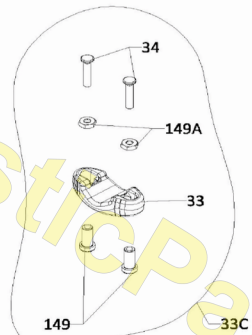
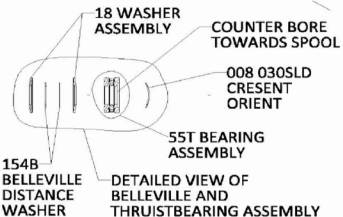
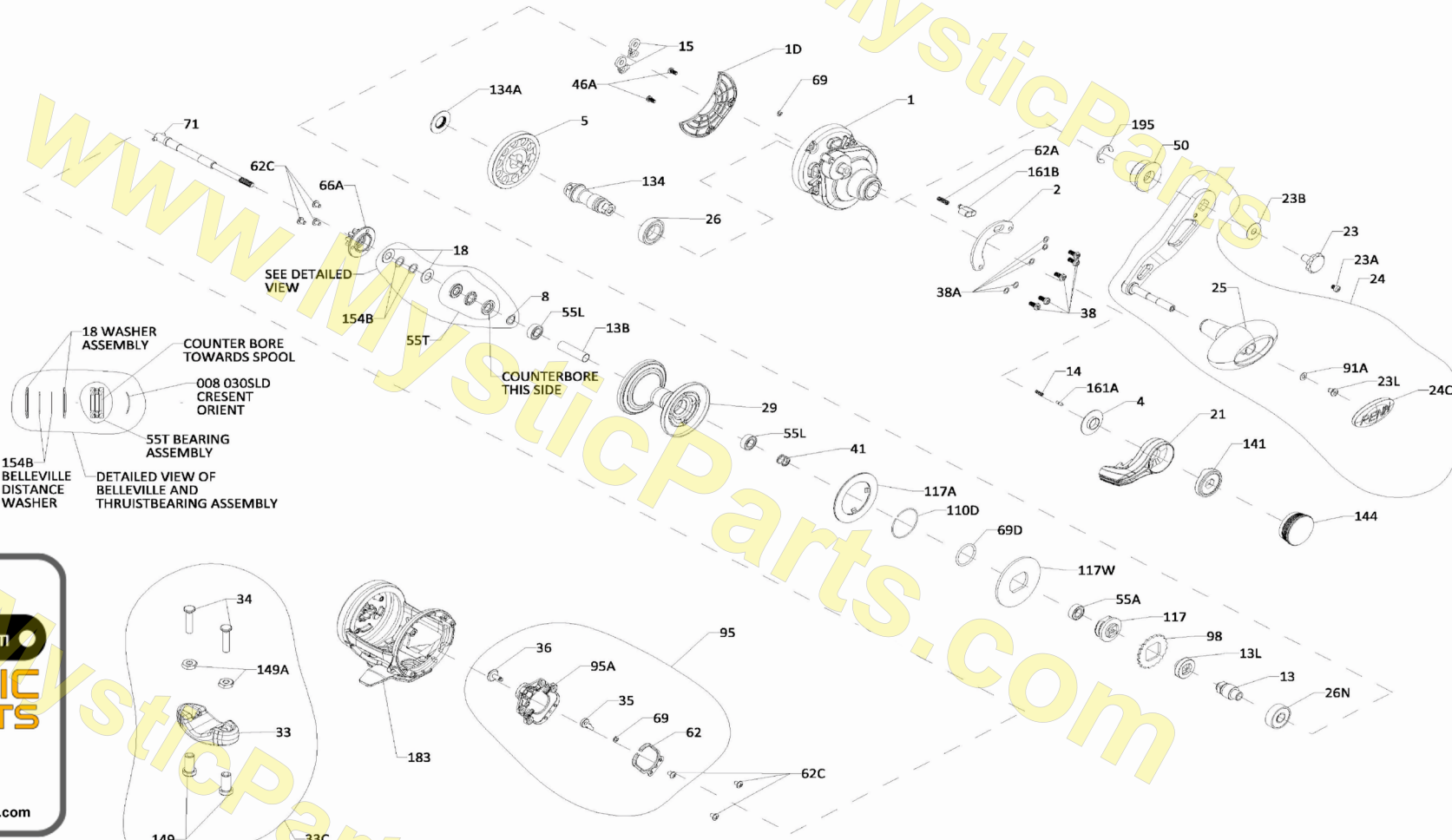




PARTS LIST FOR MODEL
Fathom II 15LD
REEL PART NO. 1563377
FTHii15LD



mysticparts.com
MYSTIC REEL PARTS
965 Radio Road
Little Egg Harbor, NJ 08087
+1 (609) 296-1300
www.mysticparts.com
customerservice@mysticparts.com

MRP Ver. 070123
(based on Penn's Rev. 1 6-14-22)

Penn Reel Parts list for Model: Fathom Leverdrag FTHii15LD (Silver / Black) 2nd Generation

KEY	PUREFISHING	PENN		KEY	PUREFISHING	PENN	
<u>NO</u>	<u>7 Digit PART #</u>	<u>PART #</u>	<u>DESCRIPTION</u>	<u>NO</u>	<u>7 Digit PART #</u>	<u>PART #</u>	<u>DESCRIPTION</u>
1	1580133	1-FTHii15LD	HANDLE SIDE PLATE	46A	1488755	46A-FTHii30LW	SCREW, COVER (2 REQUIRED)
1D	1580169	1D-FTHii15LD2	GEAR BOX COVER	50	1309888	50-FTH30LD2	GEAR SHIELD
2	1580173	2-FTHii15LD2	QUADRANT RING	55A	1238912	55A-50SLD	BALL BEARING (NON-HANDLE SIDE PLATE)
4	1264978	4-TRQ15LD2	LEVER WASHER	55L	1286985	55L-FTH20LD2	BALL BEARING (SPOOL) (2 REQUIRED)
5	1338138	5-FTH15LD	MAIN GEAR	55T	1238913	55T-30SLD	BEARING ASSEMBLY
8	1257843	8-30SLD	SPRING WASHER	62	1188664	62-FTH20LW	CLICK SPRING
13	1338142	13-FTH15LD	PINION	62A	1236596	62-TRQ40	SPRING, STRICK BUTTON
13B	1380186	13B-FTHii15LD2	SPOOL SLEEVE	62C	1188654	62C-FTH20LW	SCREW (4 REQUIRED)
13L	1338146	13L-FTH40NLD	SPACER	66A	1265059	66A-FTHLD	CLICK RATCHET
14	1181406	14-535	SPRING, DRAG LEVER PIN	69	1188657	69-FTH20LW	RETAINING E-RING (3 REQUIRED)
15	1229374	15-TRQ40	DOG ASSEMBLY (2 REQUIRED)	69D	1265060	69D-FTH15LD	RETAINING RING, DRAG
18	1265001	18-TRQ40NLD2	WASHER, SPRING (2 REQUIRED)	71	1580230	71-FTHii15LD2	SPOOL SPINDLE
21	1580195	21-FTHii15LD2	LEVER DRAG (BLACK)	91A	1277514	91A-TRQ40NLD2	HANDLE KNOB WASHER
23 & 23A SEE CORRECTIONS							
23B	1207784	23B-FTH20LW	HANDLE NUT WASHER	95	1580237	95-FTHiiLD2	CLICK MODULE ASSEMBLY
23L	1191283	23L-750	HANDLE KNOB SCREW	95A	1580238	95A-FTHiiLD2	CLICK MODULE HOUSING
24	1580204	24-FTHii25NLD	HANDLE ASSEMBLY (SILVER/BLACK)	98	1265072	98-FTH15LD2	DOG RATCHET
24C	1191335	24C-66	HANDLE KNOB CAP	110D	1309895	110D-FTH15LD2	RETAINING RING
25	1240293	25-TRQ40	HANDLE KNOB	117	1309896	117-FTH15LD2	DRIVE PLATE
26	1265023	26-TRQ40NLD2	BALL BEARING	117A	1309897	117A-FTH15LD2	DRAG WASHER (ASSEMBLY)
26N	1182145	26N-25	BALL BEARING	117W	1309900	117W-FTH15LD2	DRAG WASHER, METAL
29	1580210	29-FTHii15LD2	SPOOL (SILVER/BLACK)	134	1338160	134-FTH40NLD	GEAR STUD
33	1290729	33-TRQ	ROD CLAMP ALUMINUM	134A	1265086	134A-30SLD2	GEAR STUD NUT
33C	1580218	33C-FTHiiLD2	ROD CLAMP KIT	141	1580246	141-FTHiiLD	CAM FOLLOWER
34	1580220	34-FTHiiLD2	ROD CLAMP SCREW (2 REQUIRED)	144	1580247	144-FTHiiLD	PRESET KNOB ASSEMBLY
35	1188656	35-FTH20LW	CLICK TONGUE	149	1184702	149-45	ROD CLAMP NUT (2 REQUIRED)
36	1516151	36-FTHii15SD	CLICK BUTTON	149A	1184706	149-200	ROD CLAMP HEX NUT (2 REQUIRED)
38	1309885	38-FTH15LD	SCREW (5 REQUIRED)	154B	1309904	154B-FTH40NLD2	BELLEVILLE DISTANCE WASHER (2 REQUIRED)
38A	1188649	38A-FTH20LW	FLAT WASHER (5 REQUIRED)	161A	1265098	161A-TRQ15LD2	PIN, LEVER CLICK
41	1309886	41-FTH15LD2	SPRING, DRAG DISENGAGING	161B	1265099	161B-TRQ40NLD2	STRIKE BUTTON
				183	1580252	183-FTHii15LD2	FRAME ASSEMBLY
				195	1184955	195-40	GEAR STUD RET. E-RING

ERRORS / CORRECTIONS

23	4208147	21-FTH20LW-	HANDLE SCREW REV 0 ERROR
	1589722	23-FTHiiLD	HANDLE SCREW (BLACK) **USE THIS**
23A	1188717	23-FTH20LW	HANDLE LOCK SCREW REV 0 ERROR
	1589723	23A-FTHiiLD	HANDLE LOCK SCREW (BLACK) **USE THIS**

MYSTIC REEL PARTS REVISION!

NOTE:

Many of www.mysticparts.com schematics include changes that were either made by Penn, or errors found and corrected by our parts dept.

MRP Ver. 070123 (based on Penn's Rev. 1 6-14-22)