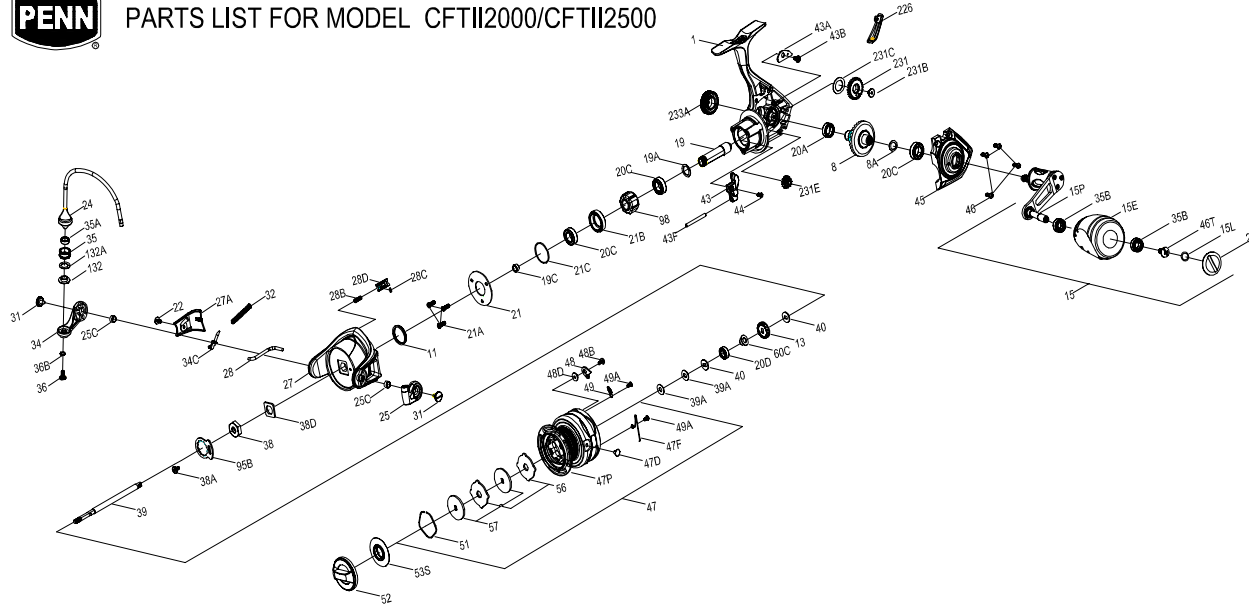




PARTS LIST FOR MODEL CFTII2000/CFTII2500



KEY NO.	PART NO.	PENN STYLE NO.	DESCRIPTION
27A	1447862	27A-CFTII2500	Rotor Cover
28	1385616	28-CLA2000	Rotor Trip Lever
28	1385617	28-CLA2500	Rotor Trip Lever
28B	1346982	28B-CLA2000	Compressing Spring
28C	1206550	28C-CLA2000	O Ring
28D	1385618	28D-CLA2000	Damper Holder
31	1385619	31-CLA2000	Bail Arm Screw
32	1363787	32-CLA2000	Compressing Spring
34	1385620	34-CLA2000	Bail Arm
34C	1385621	34C-CLA2000	Bail Arm Lever
35	1447849	35-CFTII2000	Line Roller
35A	1418992	35A-SLA3500	Line Roller Bushing
35B	1418393	35B-CLA3000	Ball Bearing
36	1389419	36-CLA2000	Line Roller Screw
36B	1419265	36B-CLA2000	Bail Arm Screw Washer
38	1447850	38-CFTII2000	Nut
38A	1385554	38A-CLA2000	Rotor Nut Lock Plate Screw
38D	1385555	38D-CLA3000	Rotor Washer
39	1447851	39-CFTII2000	Main Shaft
39	1447863	39-CFTII2500	Main Shaft
39A	1385627	39A-CLA2000	Spool Adjust Washer
40	1252700	40-CLA2000	Main Shaft Washer
43	1385629	43-CLA2000	Oscillation Slider
43A	1385630	43A-CLA2000	Slider Retainer Plate
43B	1277070	43B-SSV5500	Oscillation Slider Guide Screw
43F	1385631	43F-CLA2000	Guide Shaft
44	1126275	44-CLA2000	Rear Cover Screw
45	1447852	45-CFTII2000	Body Cover
45	1447864	45-CFTII2500	Body Cover
46	1447853	46-CFTII2000	Screw
46T	1341500	3-SSV7500LC	Screw
47	1447854	47-CFTII2000	Spool Assembly
47	1447865	47-CFTII2500	Spool Assembly
47D	1276953	47D-SSV3500	Line Hook
47F	1385637	47F-CLA2000	Line Clip Retainer
47P	1447855	47P-CFTII2000	Spool
47P	1447866	47P-CFTII2500	Spool
48	1385578	48-CLA3000	Spool Click Plate
48B	1385581	48B-CLA3000	Spool Clicker Spring Screw
48D	1385579	48D-CLA3000	Spool Clicker Spacer Ring
49	1259579	49-7000AF	Pulling Spring
49A	1294638	49A-CLA2000	Spool Clicker Spring Screw
51	1276959	51-SSV3500	Drag Washer Retainer
52	1447856	52-CFTII2000	Drag Knob Assembly
53S	1447857	53S-CFTII2000	Drag Knob Seal
56	1385645	56-CLA2000	Drag Friction Washer
57	1385646	57-CLA2000	Keyed Drag Washer
60C	1385603	60C-CLA2000	Spool Support Sleeve
95B	1385647	95B-CLA2000	Rotor Nut Locking Plate
98	1257345	98-CLA2000	One Way Clutch Bearing Assembly
132	1385648	132-CLA2000	Line Roller Collar
132A	1385649	132A-CLA2000	Line Roller Washer
226	1447858	226-CFTII2000	Rear Cover
231	1385652	231-CLA2000	Oscillation Gear
231	1385653	231-CLA2500	Oscillation Gear
231B	1307857	231B-SSV3500	Oscillation Gear Screw
231C	1385594	231C-CLA2000	Oscillation Gear Washer
231E	1385654	231E-CLA2000	Slow Oscillation Gear
233A	1385598	233A-CLA3000	Handle Cap

KEY NO.	PART NO.	PENN STYLE NO.	DESCRIPTION
1	1447839	1-CFTII2000	Body Assembly
1	1447859	1-CFTII2500	Body Assembly
8	1385502	8-CLA3000	Drive Gear
8A	1257352	8A-CLA2000	Drive Gear Shim Washer
11	1385504	11-CLA3000	Rotor Seal
13	1447840	13-CFTII2000	Click Gear
15	1447841	15-CFTII2000	Handle Assembly
15E	1447842	15E-CFTII2000	Handle Knob
15L	1417804	15L-CLA2000	Handle Knob Seal
15P	1447843	15P-CFTII2000	Sub-Handle Assembly
19	1496531	19-CFTII2000	Pinion Gear
19A	1277424	19A-SSV3500	Pinion Gear Washer
19C	1385529	19C-CLA2000	Pinion Gear Bushing
20A	1385530	20A-CLA3000	Sealed Ball Bearing
20C	1385532	20C-CLA3000	Sealed Ball Bearing
20D	1385604	20D-CLA2000	Sealed Ball Bearing
21	1385606	21-CLA2000	Ball Bearing Retainer
21A	1385607	21A-CLA2000	Ball Bearing Retainer Screw
21B	1447845	21B-CFTII2000	Bushing
21C	1385605	21C-CLA2000	O Ring
22	1092845	22-CLA2000	Rotor Cover Screw
24	1447846	24-CFTII2000	Bail Assembly
24	1447860	24-CFTII2500	Bail Assembly
24C	1417806	24C-CLA3000	Handle Knob Cap
25	1385611	25-CLA2000	Bail Holder
25C	1188261	25C-CLA2000	Bail Holder Bushing
27	1447847	27-CFTII2000	Rotor
27	1447861	27-CFTII2500	Rotor
27A	1447848	27A-CFTII2000	Rotor Cover

407-CFTII2000-2500 Rev.01 05-03-18
 1422248--CFTII2000
 1422309--CFTII2500