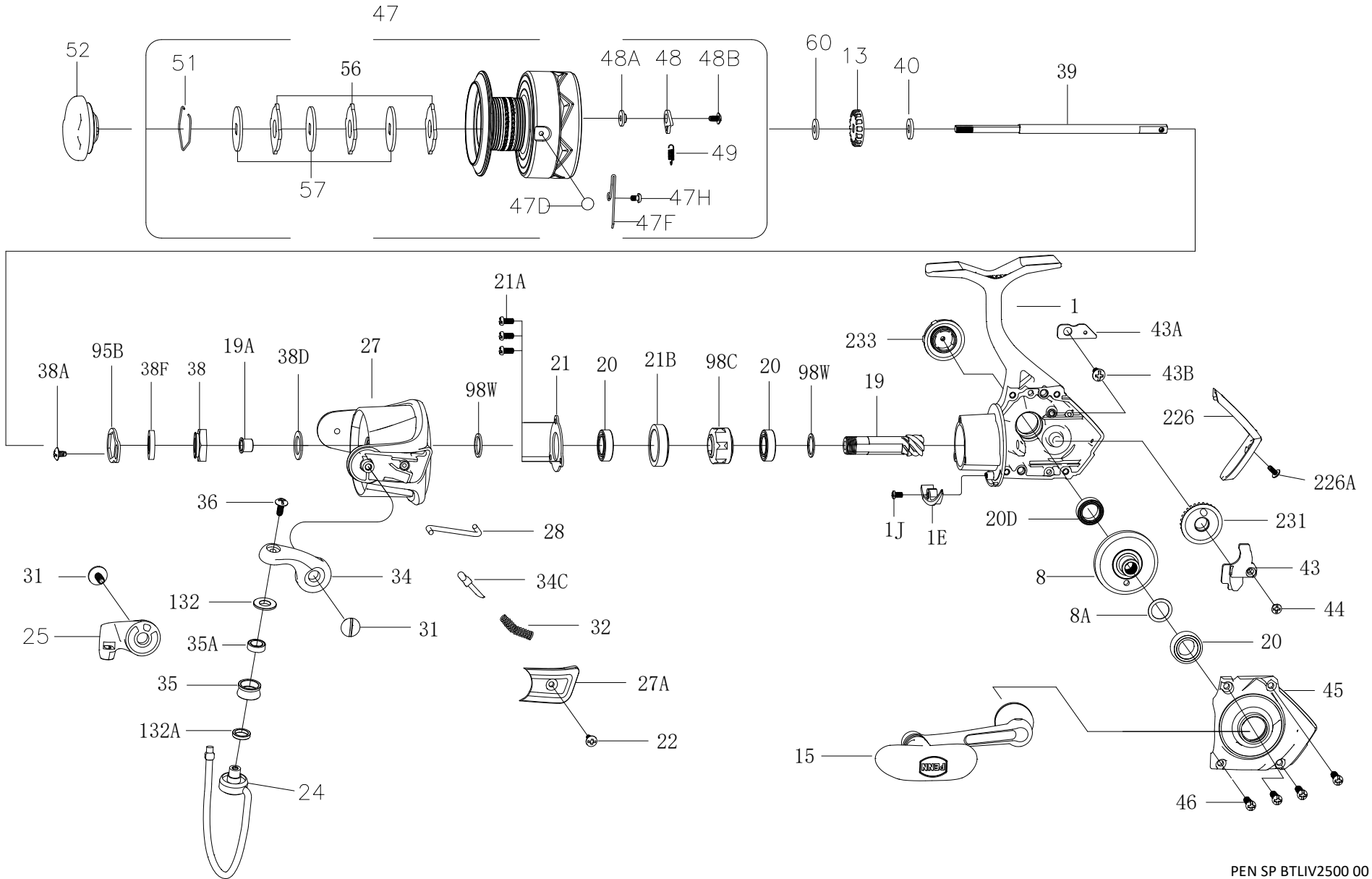




**BTLIV2500**  
**EXPLODED DRAWING**





Thank you for your recent PENN gear purchase. No matter where you fish or what you fish for, you can depend PENN to perform in any battle day in and day out. Now it's time to get your product registered and get out on the water.

<https://register.pennfishing.com>

KEY NO.	PART NO.	PENN STYLE NO.	DESCRIPTION
1	1632134	1-BTLIV2500	Housing
1E	1489251	1E-SSVI2500	Housing Slope
1J	1489177	1J-SSVI3500	Housing Slope Screw
8	1529181	8-BTLIII3000	Main Gear
8A	1191028	8A-3000SG	Shim
13	1529419	13-BTLIII1000	Click Ratchet
15	1632348	15-BTLIV2000	Handle Assembly
19	1529447	19-BTLIII2000	Pinion Gear
19A	1364314	19A-BTLII2500	Pinion Bushing
20	1308050	20-CFT3000	Ball Bearing (3 req)
20D	1211610	20D-5000BTL	Spool Ball Bearing
21	1485197	21-PURIII2500	Bearing Retainer
21A	1192644	21A-3000SG	Retainer Screw (3 req)
21B	1192646	21B-2000SG	Collar
22	1203978	22-3000PUR	Bail Pivot Cover Screw
24	1529460	24-BTLIII2500	Bail Wire Assembly
25	1529449	25-BTLIII2000	Bail Holder
27	1632135	27-BTLIV2500	Rotor
27A	1632136	27A-BTLIV2500	Bail Pivot Cover
28	1529463	28-BTLIII2500	Trip Lever
31	1313814	31-CFT2500	Bail Arm Screw (2 req)

KEY NO.	PART NO.	PENN STYLE NO.	DESCRIPTION
32	1529429	32-BTLIII1000	Bail Spring
34	1609382	34-WRTHIII2500	Bail Arm
34C	1313816	34C-CFT2500	Pivot Arm
35	1529453	35-BTLIII2000	Line Roller
35A	1489200	35A-SSVI3500	Roller Bearing
36	1251748	36-1000FRC	Bail Stud Screw
38	1632351	38-BTLIV2000	Rotor Nut
38A	1203995	38A-3000PUR	Rotor Locking Plate Screw
38D	1308070	38D-CFT3000	Rotor Nut Washer
38F	1632341	38F-BTLIV1000	Main Shaft Seal Ring
39	1529464	39-BTLIII2500	Main Shaft
40	1249042	42-1000BTL	Spool Shaft Washer
43	1313820	43-CFT2500	Crosswind Block
43A	1489274	43A-SSVI2500	Crosswind Block Plate
43B	1489213	43B-SSVI3500	Plate Screw
44	1191843	44-3000SG	Crosswind Block Screw
45	1632352	45-BTLIV2000	Housing Cover
46	1192645	21A-5000SG	Cover Screw (4 req)
47	1632137	47-BTLIV2500	Spool Assembly
47D	1489217	47D-SSVI3500	Line Clip
47F	1489218	47F-SSVI3500	Line Clip Spring

KEY NO.	PART NO.	PENN STYLE NO.	DESCRIPTION
47H	1489219	47H-SSVI3500	Line Clip Spring Screw
48	1529436	48-BTLIII1000	Click Tongue
48A	1529437	48A-BTLIII1000	Click Tongue Washer
48B	1450260	48B-PAS2500	Spool Click Screw
49	1211605	49-3000SG	Click Tongue Spring
51	1313823	51-CFT2500	Drag Retaining Ring
52	1632354	52-BTLIV2000	Drag Knob Assembly
56	1313825	56-CFT2500	Drag Washer (3 req)
57	1192041	57-2000SG	Keyed Washer (3 req)
60	1192059	60-2000SG	Thrust Washer
95B	1308081	95B-CFT3000	Rotor Locking Plate
98C	1489279	98C-SSVI2500	Clutch/Sleeve Assembly
98W	1204004	98W-3000PUR	Clutch Washer
98W	1192229	98W-3000SG	Clutch Washer
132	1489280	132-SSVI2500	Roller Washer
132A	1489281	132A-SSVI2500	Line Roller Bushing
226	1632315	226-BTLIV2000	Rear Cover
226A	1529386	226A-BTLIII3000	Rear Cover Screw
231	1313828	231-CFT2500	Crosswind Gear
233	1632346	233-BTLIV1000	Bearing Cover Assy