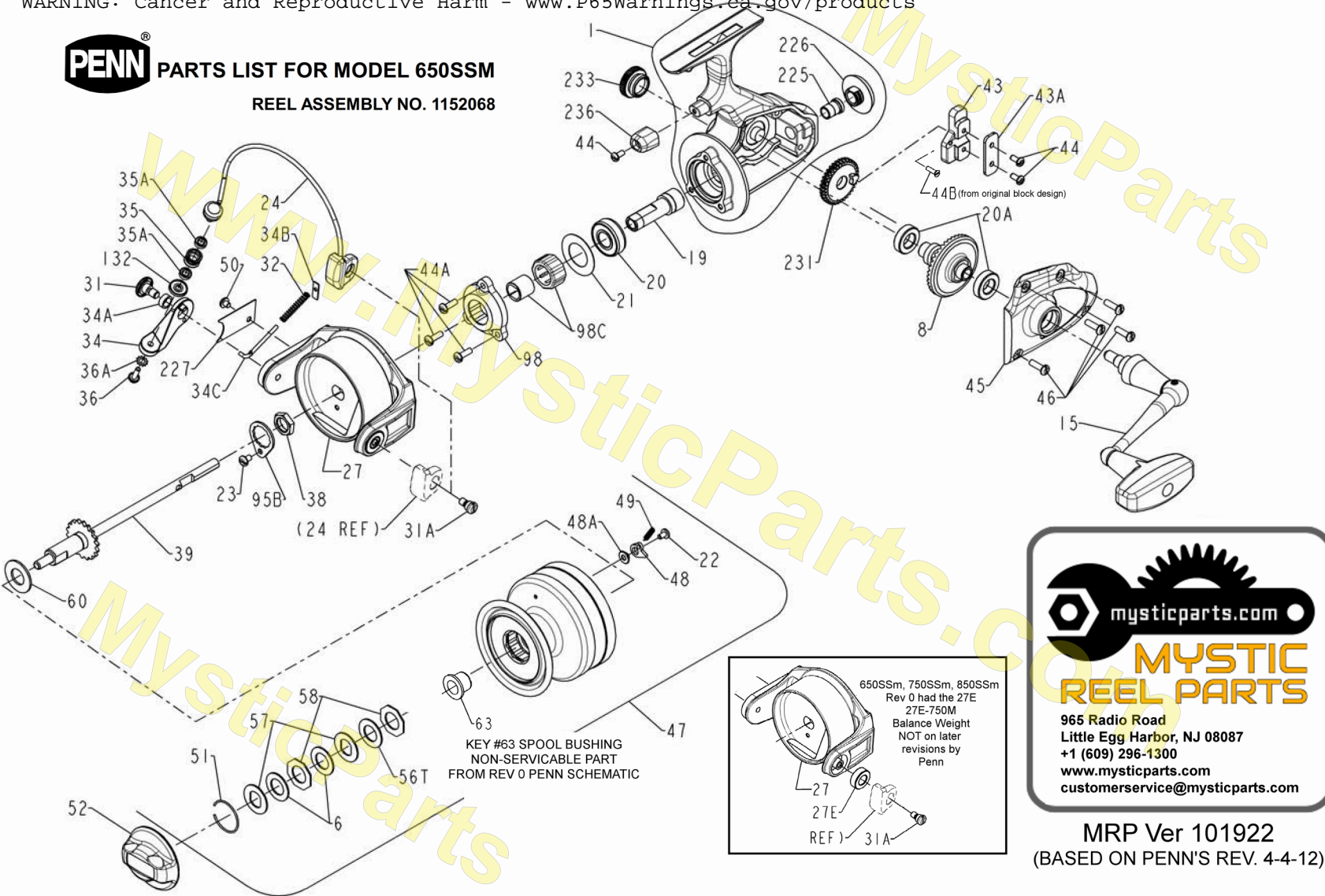


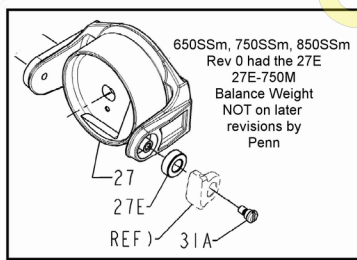


PARTS LIST FOR MODEL 650SSM

REEL ASSEMBLY NO. 1152068



KEY #63 SPOOL BUSHING
NON-SERVICABLE PART
FROM REV 0 PENN SCHEMATIC



mysticparts.com

MYSTIC REEL PARTS

965 Radio Road
Little Egg Harbor, NJ 08087
+1 (609) 296-1300
www.mysticparts.com
customerservice@mysticparts.com

MRP Ver 101922
(BASED ON PENN'S REV. 4-4-12)

Penn Reel Parts list for Model: 650SSm Metal Series

KEY NO	PUREFISHING 7 DIGIT #	PART NO.	DESCRIPTION	KEY NO	PUREFISHING 7 DIGIT #	PART NO.	DESCRIPTION
1	1190841	1-650M	HOUSING	45	1191875	45-650M	HOUSING COVER
6	1180915	6-155	DRAG WASHER HT-100 (2 REQUIRED)	46	1183576	46-750	HOUSING COVER SCREW (4 REQUIRED)
8	1181135	8N-6500	MAIN GEAR	47	1191944	47-650M	SPOOL (COMPLETE)
15 See HANDLE DESIGN CHANGES PAGE 3							
19	1181707	19-650M	PINION	48	1183722	48-750	CLICK TONGUE
20	1181790	20-704	BALL BEARING, Pinion Gear	48A	1183741	48A-750	CLICK TONGUE WASHER
20A	1181789	20-6500	BALL BEARING, Main Gear/Housing	49	1183766	49-710	CLICK TONGUE SPRING
21	1192639	21-750M	BEARING COVER	50	1183766	50-712	BAIL SPRING COVER SCREW
22 See SPOOL CLICK SCREW info below							
23	1181953	23-750	LOCKING PLATE SCREW	51	1183794	51-650	RETAINING RING
24	1182056	24-650M	BAIL WIRE	52	1183831	52N-650N	DRAG KNOB
27	1182270	27-650M	ROTOR	56T	1183917	56T-650	DRAG WASHER, TEFLON
31	1182679	31-750M	BAIL ARM SCREW	57	1183936	57-650	DRAG WASHER (KEYED) LARGE DIA (2 REQUIRED)
31A	1182689	31A-550G	BAIL CAM SCREW	58	1183959	58-650	DRAG WASHER (OCTAGON) (2 REQUIRED)
32	1182740	32-750M	BAIL ARM SPRING	60	1192063	60-750M	THRUST WASHER
34	1182833	34-750M	BAIL ARM	95B	1184312	95B-70	ROTOR LOCKING PLATE
34A	1182847	34A-750	BAIL ARM BUSHING	98	1192202	98-750M	CLUTCH HOUSING
34B	1182848	34B-750M	PIVOT PLATE	98C SEE Clutch Bearing PAGE 3			
34C	1191657	34C-750M	PIVOT ARM	132	1184596	132-750M	ROLLER WASHER
35	1191677	35-750M	LINE ROLLER	225	1185007	225-750	SPOOL SHAFT BUSHING
35A	1182965	35A-8500J	BALL BEARING (2 REQUIRED)	226	1192464	226-750M	REAR CAP
36	1183016	36-750	BAIL STUD SCREW	227	1192487	227-750M	BAIL SPRING COVER
36A	1183032	36A-750	LOCK WASHER	231	1185092	231-650M	CROSSWIND GEAR
38	1183157	38-710	ROTOR NUT	233	1185145	233-550G	BEARING COVER (CLOSED)
39	1183228	39-650M	SPOOL SHAFT	236	1192531	236-750M	TRIP BUMPER
43, 44C, 43A SEE Crosswind Block design change below							
44	1183462	44-750	TRIP BUMPER SCREW	**	NLA	237-650SSm	Decal, Housing ("Penn 650SSm")
44A	1183459	44-710	CLUTCH HOUSING SCREW (3 REQUIRED)	**	NLA	238-650SSm	Decal, Housing (Reel Speed)
				**	NLA	240-650SSm	Decal, Spool (Line Capacity)

** not shown on schematic

SPOOL CLICK SCREW CHANGED

22	1181922	22-750	SPOOL CLICK SCREW w/straight pan head (EARLY REELS)
	1186969	48B-750M	SPOOL CLICK SCREW w/phillips flat head (LATER REELS) LOWER PROFILE
SCREWS 4-40X .187 LONG -- SCREWS APPEAR TO BE INTERCHANGEABLE BUT THE PHILLIPS HEAD SITS LOWER			

KEY PUREFISHING PART
NO 7 DIGIT # NO. DESCRIPTION

KEY PUREFISHING PART
NO 7 DIGIT # NO. DESCRIPTION

Crosswind Block Design Change

ORIGINAL DESIGN SINGLE SCREW

43	1183406	43-750M	CROSSWIND BLOCK ORIGINAL
44B	1183454	44-560	SCREW FOR CW BLOCK
43A	NLA	43A-750	CROSSWIND BLOCK PLATE ORIGINAL

This design screws a single screw through the block into the shaft. It puts too much pressure on the shaft.

NEWER DESIGN DUAL SCREWS

43	1183406	43N-750M	CROSSWIND BLOCK, NEWER
44C	1183462	44-750	CROSSWIND SCREW (2 REQUIRED)
43A	1183427	43A-750N	CROSSWIND BLOCK PLATE, NEWER

This is actually the same design as the older SS reels, More strength in the shaft this way.

NOTE: 39-650M spool shaft is still currently coming in with the hole for the screw in the shaft. Eventually, Penn will be releasing shafts with no holes in them. You can add strength to the existing 43-750M crosswind block by adding the 44-750 screws with the 43A-750 plate.

CLUTCH BEARING ASSEMBLY (aka A/R Bearing)

98B	NLA	98B-5600	BEARING	98C	1184384	98C-750M	CLUTCH BEARING ASSEMBLY
98S	NLA	98S-750M	CLUTCH BEARING SLEEVE				

98C ASSEMBLY REPLACES 98B and 98S

HANDLE DESIGN CHANGED

15	NLA	15-650M	HANDLE ASSEMBLY Gen 1 + 2	15	1181491	15N-650M	HANDLE ASSEMBLY GEN 3
**	NLA	15-650M-H	HANDLE Sub assembly	**	1191149	15-750M-H	HANDLE Sub assembly
15B	NLA	15B-750M	DUAL PIVOT	15B	N/A	15B- ??	DUAL PIVOT thicker than on old handle (NOT SERVICABLE)
15C		15C-- ??	PIVOT SCREW, UNKNOWN #	15C		15C-- ??	PIVOT SCREW, UNKNOWN #
16	NLA	16-750M	COLLAR	16	N/A	16- ??	SWOOPING COLLAR (NOT SERVICABLE)

3 Generations of Cosmetic Changes to the HANDLE

15-650M GEN 1 Flat plain rubberized knob and straight line angled outward collar

15-650M GEN 2 Flat rubberized knob WITH GRIP and straight line angled outward collar

15N-650M GEN 3 Flat rubberized knob WITH GRIP and swooping to outward lip collar

Parts non-servicable or design changed

27E 1191470 27E-750M BALANCE WEIGHT
27E was on the rev 0 schematic but removed after rev 5?

63 NLA 63-750 SPOOL BUSHING
63 was on the rev 0 schematic but has never been available

MYSTIC REEL PARTS REVISION!

NOTE: Many of www.mysticparts.com schematics include changes that were either made by Penn, or errors found and corrected by our parts dept.
MRP Ver 101922 (BASED ON PENN'S REV. 6 4-4-12)