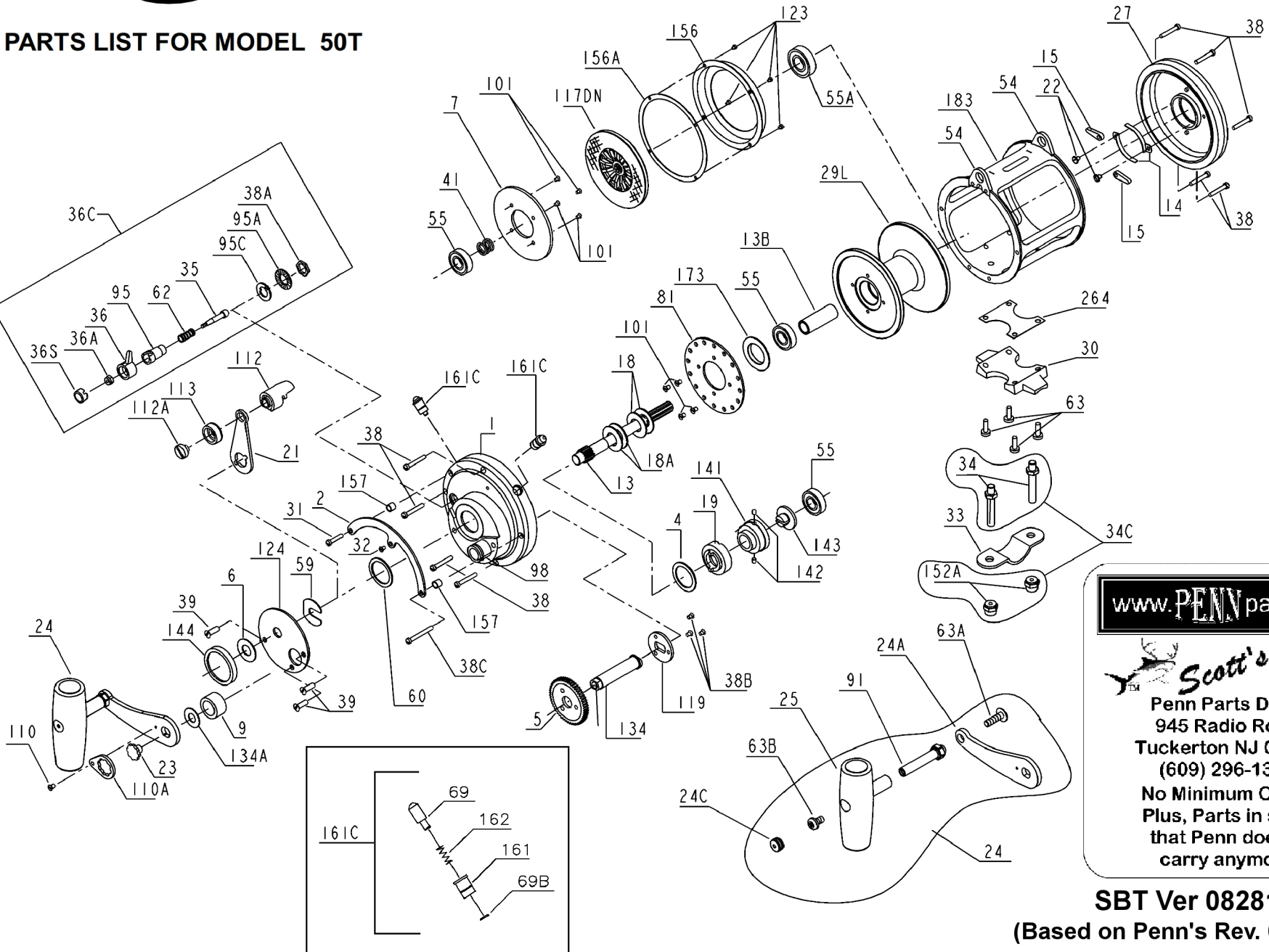




# PARTS LIST FOR MODEL 50T



[www.PENNparts.com](http://www.PENNparts.com)

**Scott's Bait & Tackle**  
Penn Parts Dept.  
945 Radio Road  
Tuckerton NJ 08087  
(609) 296-1300  
No Minimum Order!  
Plus, Parts in stock  
that Penn doesn't  
carry anymore.

**SBT Ver 082816**  
(Based on Penn's Rev. 6 7-21-04)

## Penn Reel Parts list for Model 50T

## INTERNATIONAL II SPEED

KEY NO	PART NO.	DESCRIPTION	KEY NO	PART NO.	DESCRIPTION
2	2-50	QUADRANT RING	38B	38-7	COUPLING PLATE SCREW (3 REQ.)
4	4-50	CAM THRUST WASHER	38C	38-80	LONG QUADRANT SCREW
5	5-50	MAIN GEAR (50T)	41	41-50	L.S. BEARING SPRING
6	6-155	SPACER WASHER	*	46A-704	CAM HOUSING SCREW (2 REQ)
7	7-50	FLOATING DRAG WASHER	54	54-50T	HARNESS LUG (2 REQ.)
9	9-30	SPACING SLEEVE	55	55-50	BALL BEARING (3 REQ.)
13	13-50	PINION GEAR	55A	55-80	BALL BEARING (1 REQ.)
13B	13B-50T	SPOOL SLEEVE	59	59-50	SLOTTED WASHER
14	14-50	DOG SPRING (2 REQ.)	60	60-50	BACKING WASHER
15	15-50	DOG (2 REQ.)	62	62-50	CLICK SPRING
18	18-50W	DISC CLUTCH SPRING (2 REQ.)	63	63-30T	STAND SCREWS (4 REQ.)
18A	18-50TW	DISC CLUTCH SPRING (2 REQ.)	63A	63A-50	GEAR RETAINER SCREW
19	19-50W	ECCENTRIC CAM	63B	63-50	SCREW
21	21-50	ECCENTRIC LEVER	63C	63A-50	LONG SCREW
22	22-109	DOG SPRING SCREW	69B	69B-50	RETAINING RING
23	23-114	HANDLE SCREW	81	81-50	RATCHET
24	24-50T	HANDLE COMPLETE	91	91N-50	HANDLE RIVET
24A	24-50-1	HANDLE BLANK ONLY	95	95-50	CLICK TONGUE BUSHING
24C	24C-50	HANDLE KNOB CAP	95A	95A-20	CLICK BUSHING WASHER
25	25-50	HANDLE KNOB	95C	95A-50	CLICK BUSHING WASHER
27	27-50T	L.S. PLATE ASSEMBLY	98	98-50T	BRIDGE BUSHING
29L	29L-50T	SPOOL	101	101-30	RATCHET PLATE SCREW (4 REQ.)
30	30-50T	STAND	110	110-50	HANDLE LOCK SCREW
31	31T-20	SHORT QUADRANT SCREW	110A	110A-50	HANDLE LOCKING PLATE
32	32-14CH	CENTER QUADRANT SCREW	112	112-50	ECCENTRIC LEVER KNOB
33	33-114	ROD CLAMP	112A	112A-50	ECCENTRIC KNOB SCREW
*	33R-114	RINGED ROD CLAMP (OPTIONAL)	113	113-50	ECCENTRIC LEVER CAP
34	34-50T	CLAMP SCREW (2 REQ.)	117	117DN-50	OUTER DRIVE PLATE ASSEMBLY
34C	34C-50T	ROD CLAMP SCREW W/NUT	119	119-50	COUPLING PLATE
36A	36-700	CLICK BUTTON NUT	123	123-50	DRAG COVER SCREW (4REQ.)
36S	36S-80ST	CLICK BUTTON CAP	124	124-50	BRIDGE COVER
38	38T-50	FRAME SCREW (9 REQ.) (38-50)	*	125-50	CAM HOUSING
38A	38-710	CLICK BUSHING NUT			

134	134-50	GEAR STUD	156	156-50	DRAG COVER
134A	134A-50	GEAR STUD WASHER	156A	156A-50	DRAG COVER SEAL
141	141-50	CAM FOLLOWER	157	157-50	QUADRANT SPACER BUSHING (2 REQ.)
142	142-50	CAM FOLLOWER PIN (2 REQ.)	173	173-50T	SPOOL BUSHING
143	143-50	ADJUSTING SCREW	183	183-50T	TUBE FRAME
144	144-50	PRESET KNOB	264	264-30T	STAND GASKET
152A	152A-50T	ROD CLAMP ACORN NUT (2 REQ.)	<i>*NOT SHOWN</i>		
*	154-50	SHIM, SPOOL SHAFT			

NOTE: Many of [www.pennparts.com](http://www.pennparts.com) schematics include changes that were either made by Penn, or errors found and corrected by our parts dept.  
 SBT Ver. 082816 (Based on Penn's Rev 6 7-21-04)

<u>OLDER DESIGN</u>			<u>NEWER DESIGN</u>		
1	1-50T	RIGHT SIDE PLATE ASSEMBLY	1	1-50TN	RIGHT SIDE PLATE ASSEMBLY
*	3-50	BRIDGE			(BRIDGE NOW PART OF PLATE)
35	35-50	CLICK TONGUE	35	35-50N	CLICK TONGUE
36	36-50	CLICK BUTTON	36	36N-50	CLICK BUTTON
---	---	---	*	36C-50	CLICK BUTTON COMPLETE ASSEMBLY
39A	39-50	COVER SCREW (3 REQ.)	39A	39A-80S	COVER SCREW (3 REQ.)
98	98-50T	BRIDGE BUSHING	98	98-50TN	BRIDGE BUSHING

**NOTES:** Key 39A cover screws are a different length due to plate differences  
 The 36C-50 click button assembly can be used on the older plates  
 There are photos of the plates and clicker parts in the [www.pennparts.com](http://www.pennparts.com) website for comparison

<u>OLD INDIVIDUAL PARTS:</u>			<u>MERGED INTO ONE UNIT:</u>		
69	69-50	LOCATING PIN (2 REQ.)			
69B	69B-50	RETAINING RING (2 REQ.)	161C	161C-50	LOCATING PIN BUSHING ASSEMBLY (2 REQ.)
161	161-50	LOCATING PIN BUSHING (2 REQ.)			
162	162-50	LOCATING PIN SPRING (2 REQ.)			