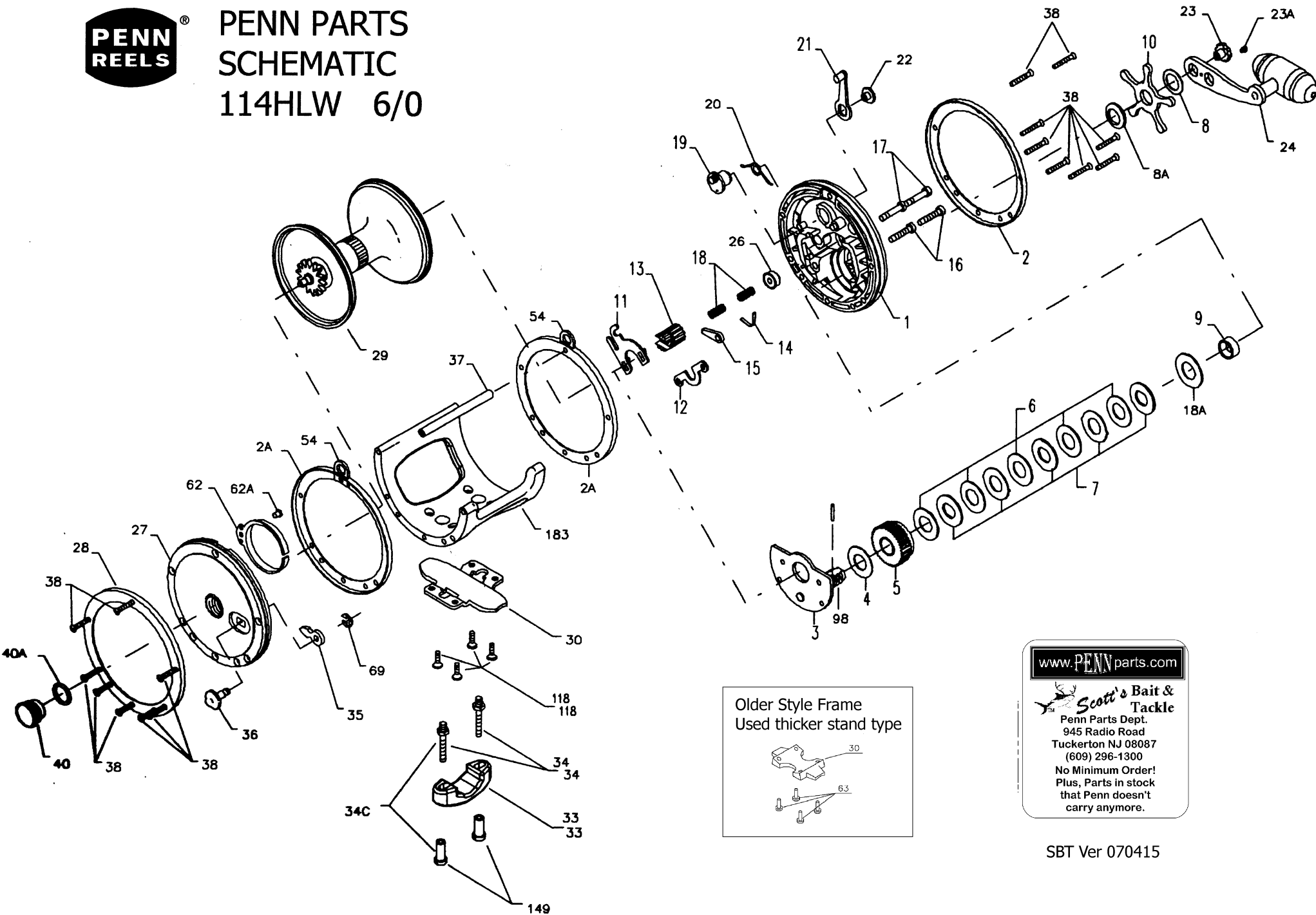
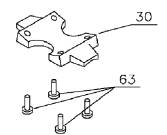




# PENN PARTS SCHEMATIC 114HLW 6/0



Older Style Frame  
Used thicker stand type



[www.PENNparts.com](http://www.PENNparts.com)

**Scott's Bait & Tackle**  
Penn Parts Dept.  
945 Radio Road  
Tuckerton NJ 08087  
(609) 296-1300  
No Minimum Order!  
Plus, Parts in stock  
that Penn doesn't  
carry anymore.

## Penn Reel Parts list for Model: 114HLW w/half frame

KEY NO	PART NO.	DESCRIPTION	KEY NO	PART NO.	DESCRIPTION
1	1-114H	HANDLE SIDE PLATE	22	22-60	ECCENTRIC SCREW
2	2-114H-O	OUTER HANDLE SIDE RING	23	23-116	HANDLE SCREW
2A	2-114-I	INNER SIDE RING (2 REQUIRED)	23A	110-60	HANDLE LOCK SCREW
3	3-114H	BRIDGE ASSEMBLY	24	24-57	HANDLE
4	4-115	FIBER WASHER	26	26-116	HANDLE SIDE BEARING
5	5-115	MAIN GEAR	27	27N-114H	NON-HANDLE SIDE PLATE
6	6-115	DRAG WASHER	28	2-114-O	OUTER NON-HANDLE SIDE RING
7	7C-115	METAL WASHER SET	29	29L-114HLW	SPOOL
8	8-114	TENSION SPRING	33	33-340	ROD CLAMP
8A	8-115	TENSION SPRING	34	34-114HLW	ROD CLAMP SCREW (2 REQ)
9	9-114H	SPACING SLEEVE	35	35-114	CLICK TONGUE
10	10-114	STAR DRAG WHEEL	36	36-114H	CLICK BUTTON
11	11-114	ECCENTRIC JACK	37	37-115	FRAME POST (114HLW)
12	12-114	PINION YOKE	38	39-12	HANDLE SIDE POST SCREW (8 REQUIRED)
13	13-114H	PINION	39	39-12	NON-HANDLE SIDE POST SCREW (8 REQUIRED)
14	14-114	DOG SPRING	40	40-114HL	NON-HANDLE SIDE BEARING
15	15-114H	DOG	40A	120-114H	NON-HANDLE SIDE BEARING O-RING
16	16-114	LOWER BRIDGE SCREW (2 REQUIRED)	54	54-114	HARNES LUG (2 REQUIRED)
17	17-114	UPPER BRIDGE SCREW (2 REQUIRED)	62	62-114	CLICK SPRING
18	18-114	CLUTCH SPRING (2 REQUIRED)	62A	63-209	CLICK SPRING SCREW
18A	18-114H	SPRING DISK	69	69B-600	RETAINING RING
19	19-114	ECCENTRIC	98	98-114	GEAR SLEEVE
20	20-114	ECCENTRIC SPRING	149	149-45	ROD CLAMP NUT (2 REQUIRED)
21	21-114	ECCENTRIC LEVER			

NOTE: Many of [www.pennparts.com](http://www.pennparts.com) schematics include changes that were either made by Penn, or errors found and corrected by our parts dept.  
SBT Ver 070415

### DESIGN CHANGE FRAMES AND STANDS

183	183-114HLW	FRAME, ORIG, THICK STAND USES	183	183N-114HLW	FRAME, LATER, THIN STAND USES
30	30-50T	STAND	30	30-114HL	STAND
63	63-30T	SCREWS, STAND (4 REQUIRED)	118	118-80	SCREWS, STAND (4 REQUIRED)