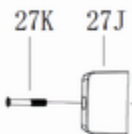
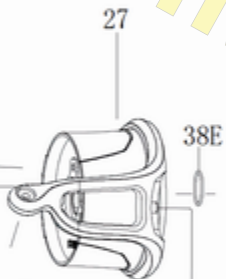




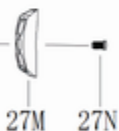
SSVI6500BLS



Parts To Secure the Rotor Cup
SAME ON BOTH VERSIONS

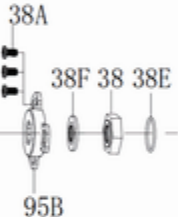


Line Roller Parts
SAME ON BOTH VERSIONS



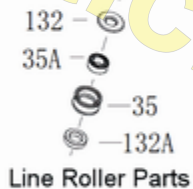
TO CONVERT TO BLS (Bail-less)
You will need **all of the parts** in this box.
You can reuse **the rotor securing parts**
and the **line roller parts**, from your Standard
SSVI6500 reel

SAME ON BOTH VERSIONS



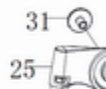
Parts To Secure the Rotor Cup

SAME ON BOTH VERSIONS

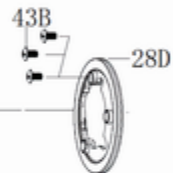
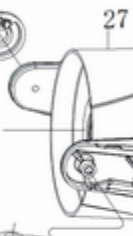


Line Roller Parts

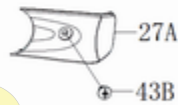
SSVI6500



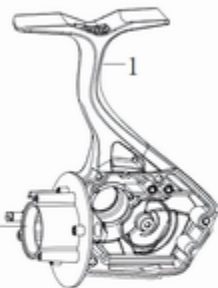
Parts To Secure the Rotor Cup
SAME ON BOTH VERSIONS



Line Roller Parts
SAME ON BOTH VERSIONS



TO CONVERT TO STD (Standard)
You will need **all of the parts** in this box.
You can reuse **the rotor securing parts**
and the **line roller parts**, from your
Bail-less SSVI6500BLS reel



Housing is just here for reference because of Rotor Brake positioning

Penn Reel Parts list for Model: SSVi6500BLS Spinfisher VI BAIL-LESS (1481270)

Penn Reel Parts list for Model: SSVi6500 Spinfisher VI (Standard) (1481264)

Converting in either direction changing from Std to BLS or BLS to Std

For the std to BLS conversion, all the line roller pieces are transferred to the BLS rotor assembly including the screw, and capped with the #26 slider

Both parts use the same parts for the line roller assembly and to secure the rotor. Those parts in common are also listed here for reference.

SSVi6500BLS (Bail-less)

KEY	Order	PUREFISHING	PENN PART	
NO	QTY	NO.	NO.	DESCRIPTION
1	1	1489453	1-SSVi6500BLS	HOUSING, BODY ASSEMBLY
47	1	1489460	47-SSVi6500BLS	SPOOL ASSEMBLY
If changing from STD to BLS, changing the above is OPTIONAL It would just properly label the reel				

These parts to CONVERT to BLS

KEY	Order	PUREFISHING	PENN PART	
NO	QTY	NO.	NO.	DESCRIPTION
27	1	1489455	27-SSVi6500BLS	ROTOR
27J	1	1489456	27J-SSVi6500BLS	CLUMP WEIGHT
27K	1	1489457	27K-SSVi6500BLS	CLUMP WEIGHT SCREW
27M	1	1489458	27M-SSVi6500BLS	CLUMP WEIGHT
27N	1	1489459	27N-SSVi6500BLS	CLUMP WEIGHT SCREW
26	1	1489454	26-SSVi6500BLS	LINE SLIDER

SSVi6500 (Standard reel)

KEY	Order	PUREFISHING	PENN PART	
NO	QTY	NO.	NO.	DESCRIPTION
1	1	1489446	1-SSVi6500	HOUSING, BODY ASSEMBLY
47	1	1489442	47-SSVi6500	SPOOL ASSEMBLY
If changing from BLS to STD changing the above is OPTIONAL It would just properly label the reel				

These parts to CONVERT to Standard reel with Bail Wire

KEY	Order	PUREFISHING	PENN PART	
NO	QTY	NO.	NO.	DESCRIPTION
31	2	1489310	31-SSVi7500	BAIL ARM SCREW (2 REQUIRED)
25	1	1489433	25-SSVi6500	BAIL HOLDER (BAIL CAM)
27	1	1489434	27-SSVi6500	ROTOR
28	1	1489436	28-SSVi6500	TRIP LEVER
34C	1	1489399	34C-SSVi5500	PIVOT ARM
32	1	1489397	32--SSVi5500	BAIL SPRING
27A	1	1489435	27A-SSVi6500	BAIL PIVOT COVER
43B	4	1489213	43B-SSVi3500	SCREW (1 for Pivot Cover, 3 for the Rotor Brake)
34	1	1489438	34-SSVi6500	BAIL ARM
24	1	1489452	24-SSVi6500	BAIL WIRE
28D	1	1489437	28D-SSVi6500	ROTOR BRAKE

These parts are used in BOTH BLS and STD versions for line roller

Ordering needed only if worn or damaged

KEY	Order	PUREFISHING	PENN PART	
NO	QTY	NO.	NO.	DESCRIPTION
132	1	1489410	132-SSVi5500	LINE ROLLER COLLAR
132B	reuse	not available	132B-SSVi5500	WASHER (Penn has not given part #)
35A	1	1242222	35A-5000BTL	LINE ROLLER BALL BEARING
35	1	1489400	35-SSVi5500	LINE ROLLER
132A	1	1489411	132A-SSVi5500	LINE ROLLER BUSHING

These parts are used in BOTH BLS and STD versions to secure the Rotor

Ordering needed only if worn or damaged

KEY	Order	PUREFISHING	PENN PART	
NO	QTY	NO.	NO.	DESCRIPTION
38A	3	1489316	38A-SSVi7500	ROTOR NUT LOCK PLATE SCREW (3 REQUIRED)
95B	1	1489223	95B-SSVi3500	ROTOR NUT LOCKING PLATE / COVER
38F	1	1489402	38F-SSVi5500	SEAL RING (FOR MAIN SHAFT)
38	1	1489401	38-SSVi5500	ROTOR NUT
38E	2	1489203	38E-SSVi3500	ROTOR O-RING (2 REQUIRED)

<https://www.mysticparts.com/PennParts/Parts/KITSSVi6500BLS.aspx>